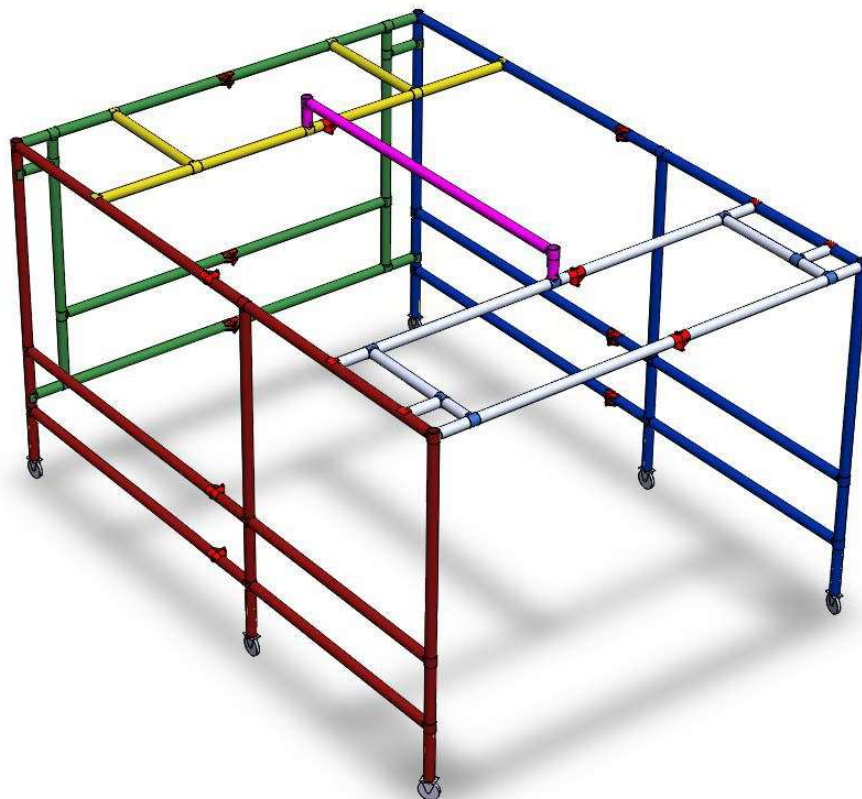


CUTTING STATION: ASSEMBLY INSTRUCTIONS

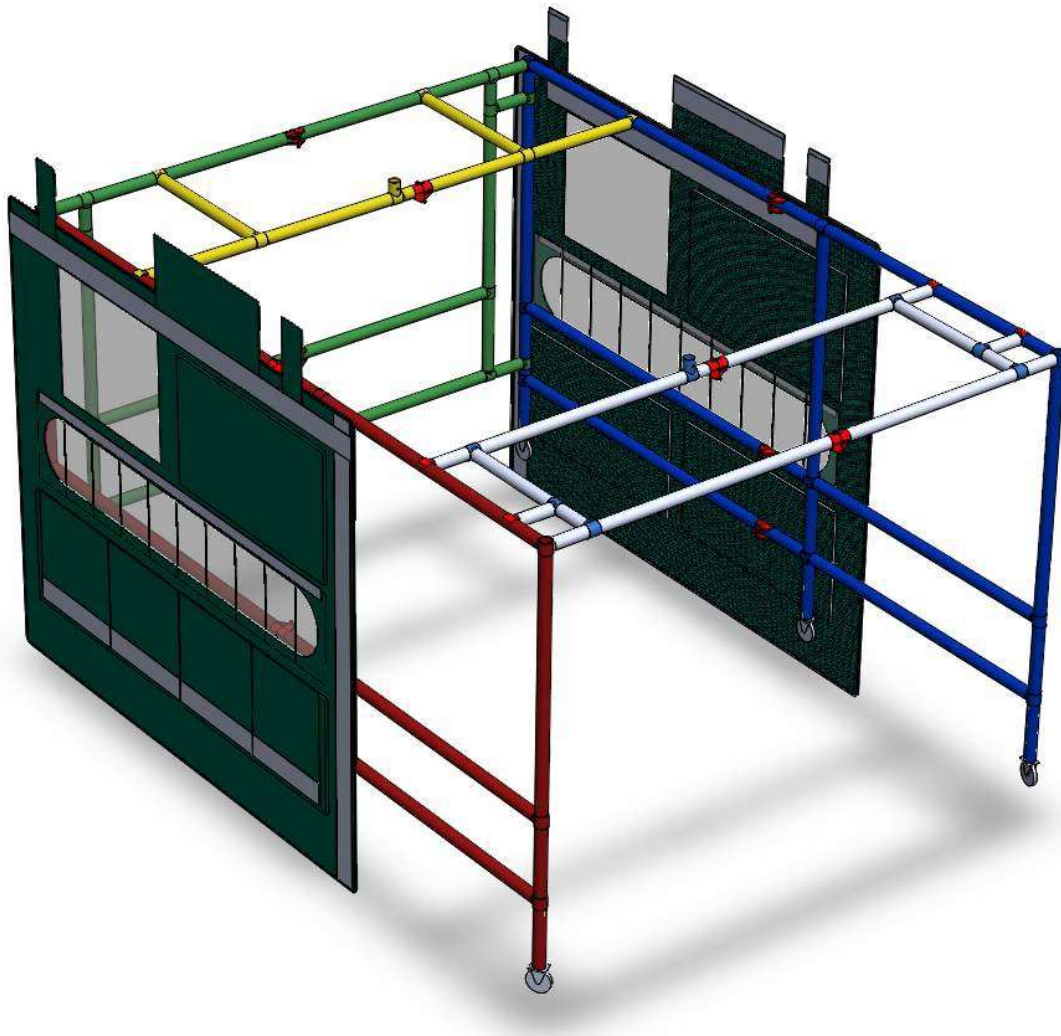
STAGE 1 - FRAME



1. Unfold all frames. Once assembled all knuckles should face inwards.
2. Connect **RED** to **GREEN** – the **RED** middle vertical tube is offset from the centre; ensure the smaller gap is away from **GREEN**
3. Connect **BLUE** to **GREEN** – ensure the smaller gap is away from **GREEN**.
4. Attach **GREY** roof brace.
5. Attach **YELLOW** roof brace.
6. Do NOT attach **PINK** roof brace.
7. Insert the wheels along one side, then the remaining side.

Note: The frames are not actually coloured.

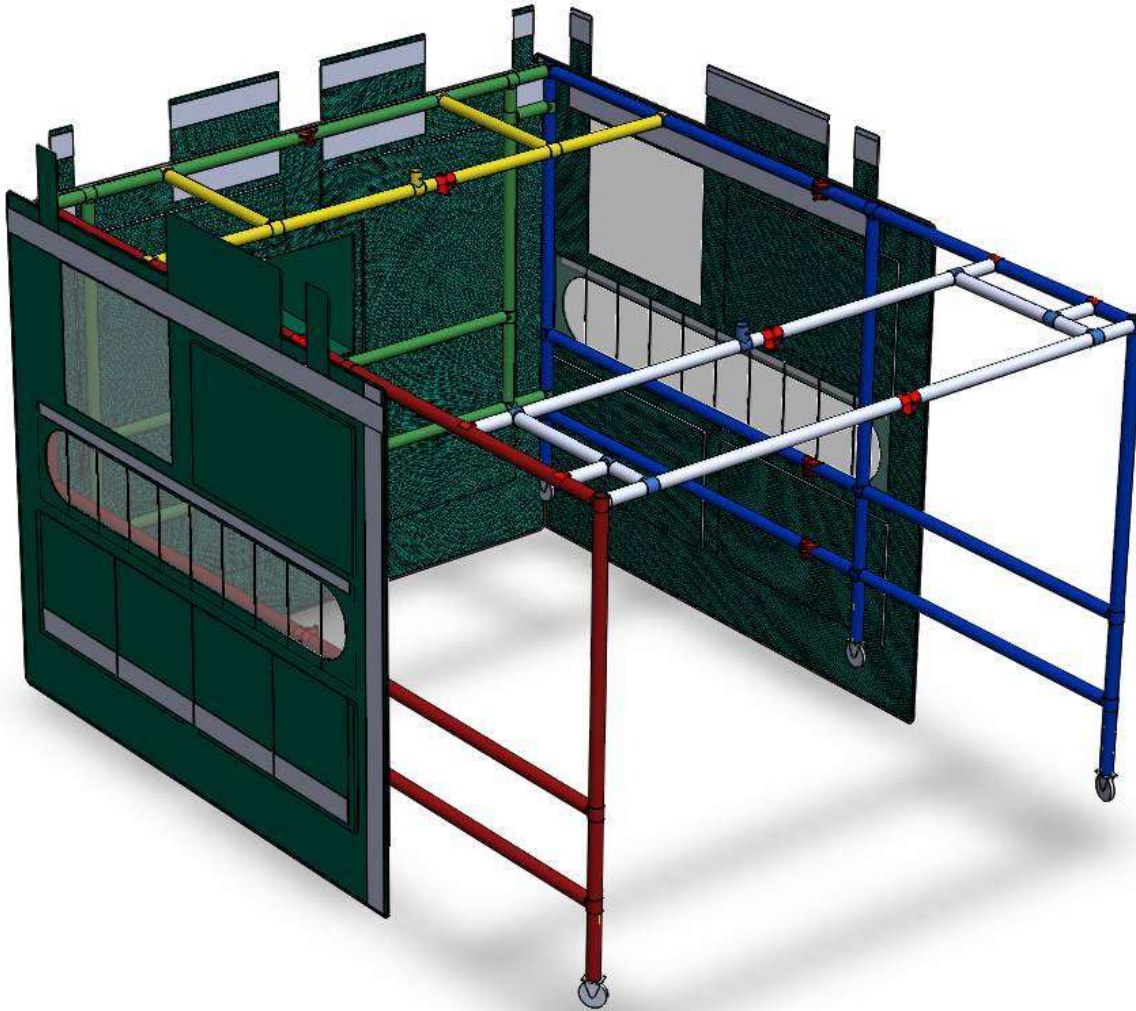
STAGE 2 - LEFT AND RIGHT HAND SIDE BARRIER PLACEMENT



Attach the CS barriers. Wrap the Velcro flaps around the top tubes and secure in place.

- a.** Ensure that the viewing window is at the back of the frame.
- b.** Attach the Velcro on the slots to the frame.

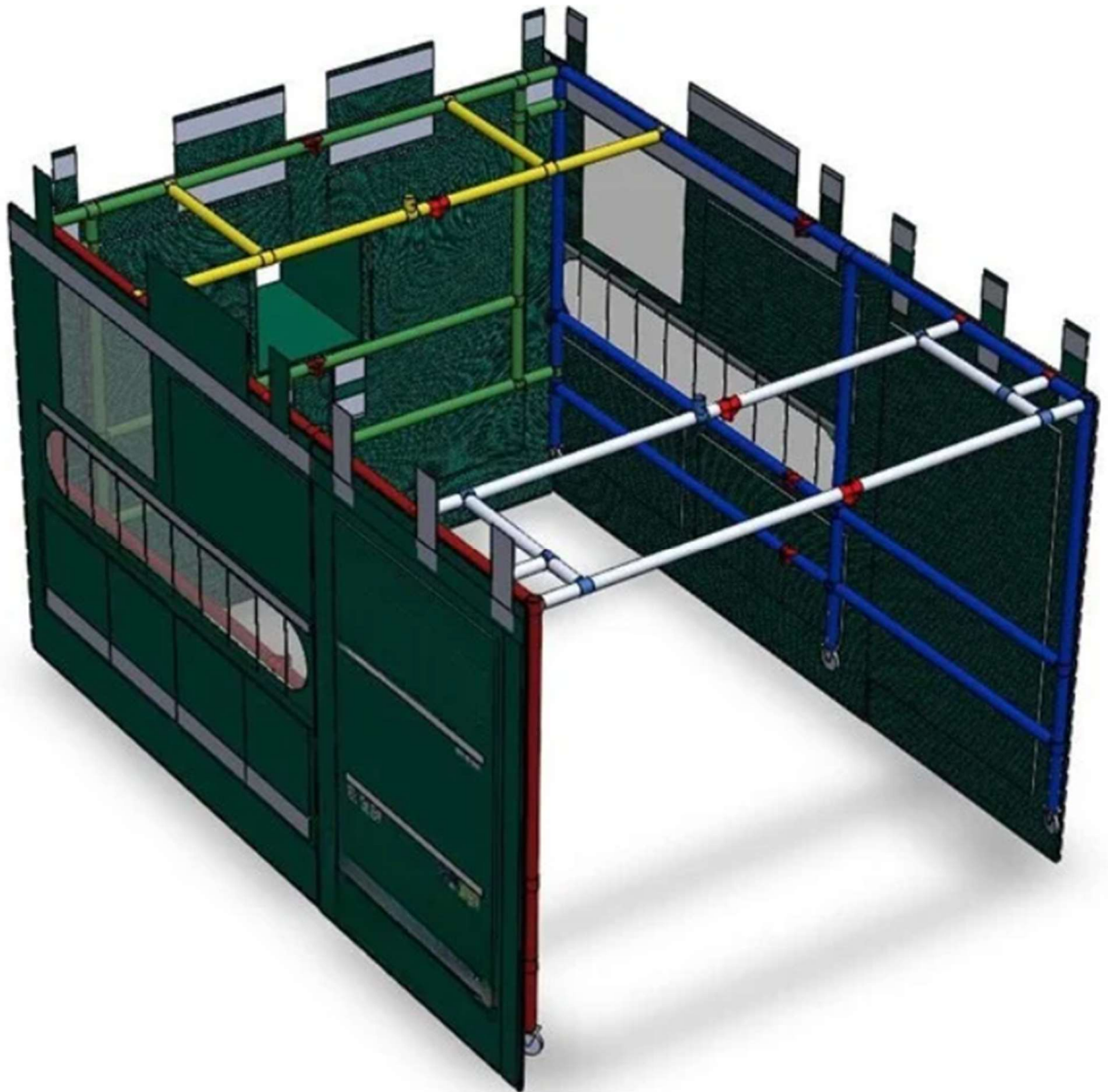
STAGE 3 - REAR BARRIER PLACEMENT



Attach the ventilation barrier using the Velcro straps on the top tube.

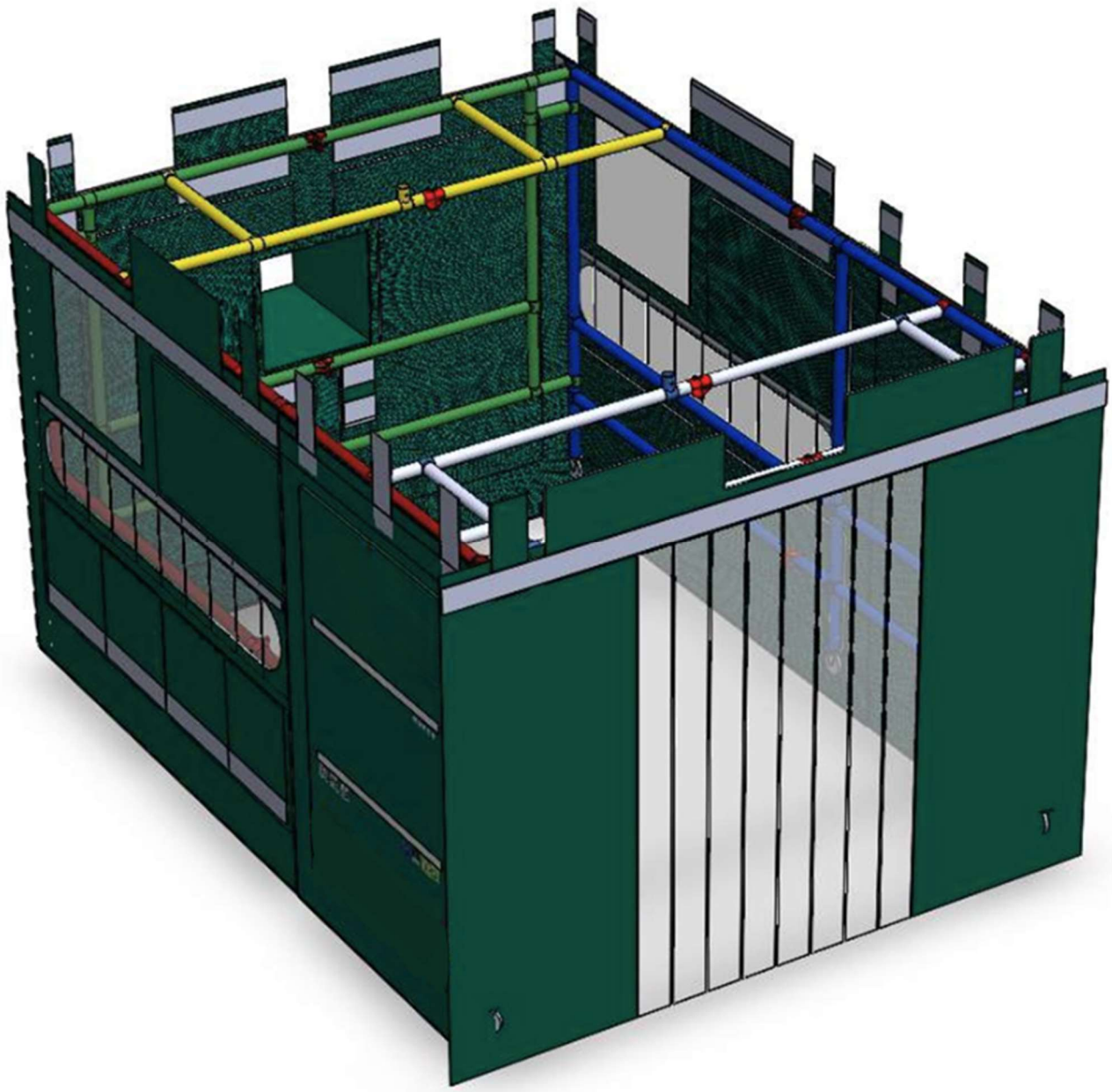
- a.** Attach the ventilation hole Velcro straps to the horizontal tubes.
- b.** Fold the CS barriers around the corner and attach to the ventilation barrier using the Velcro strips.

STAGE 4 - LEFT AND RIGHT HAND SIDE SINGLE BARRIER PLACEMENT



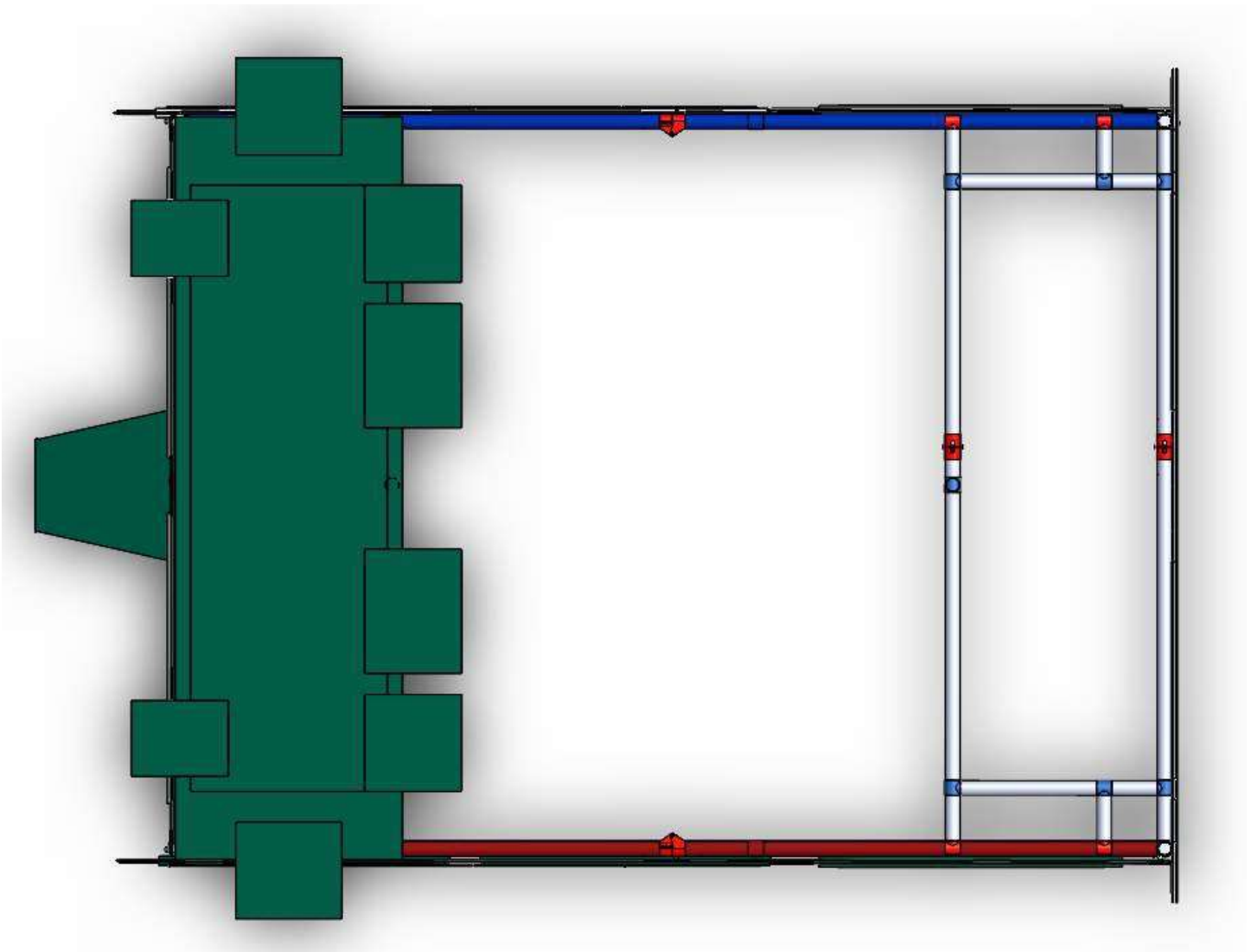
Attach the smaller Echo Barriers to the frame. The CS barrier overlap these and attach by Velcro.

STAGE 5 - DOOR PANEL BARRIER PLACEMENT



Attach the door panel. Fold the edges around the corner and attach to the small Echo Barriers by the Velcro.

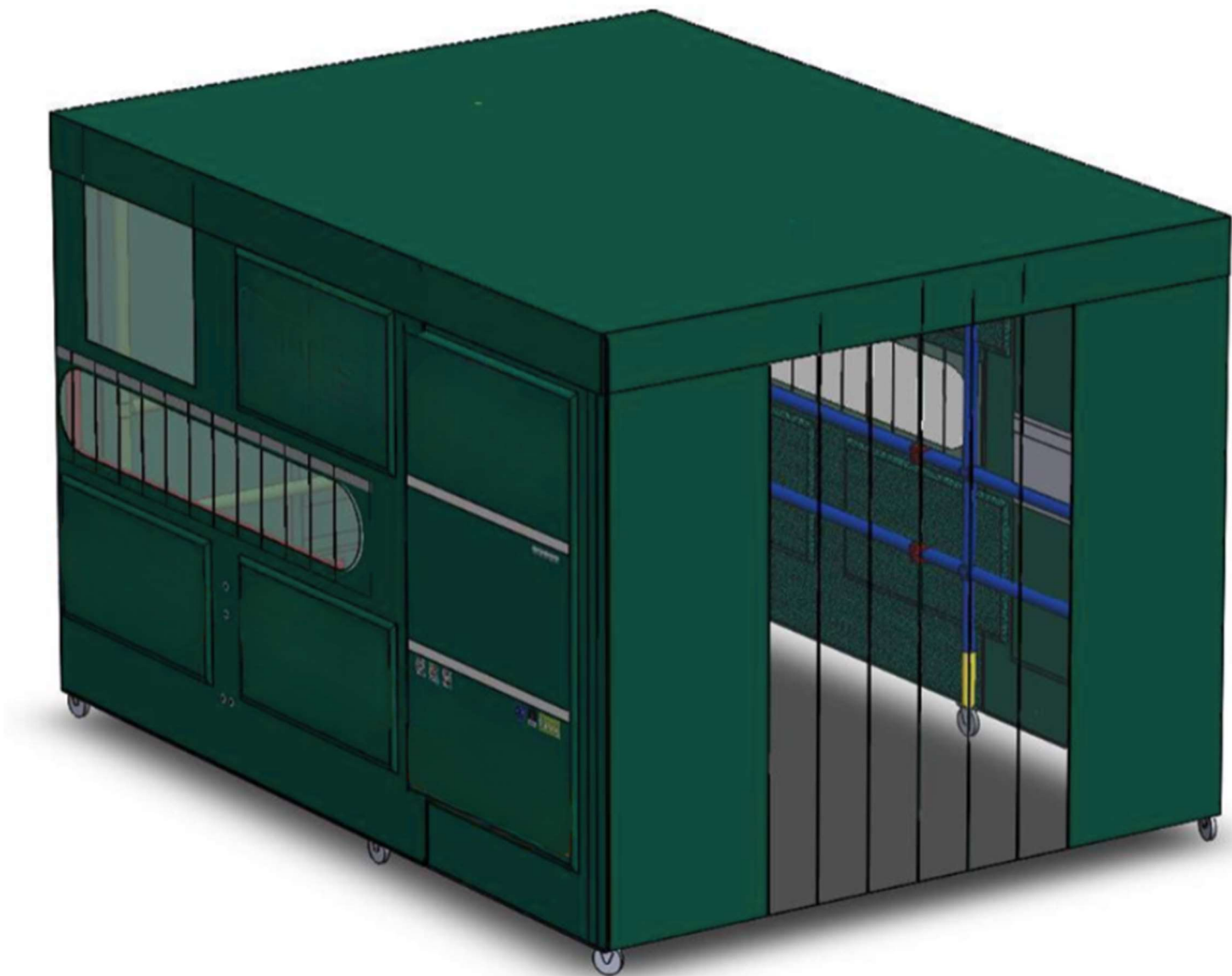
STAGE 6 - ROOF PANEL BARRIER PLACEMENT



Attach the roof barrier above the ventilation barrier.

- a. Make sure the Velcro tabs are lined up the same as the picture below, then fasten them to the frame.

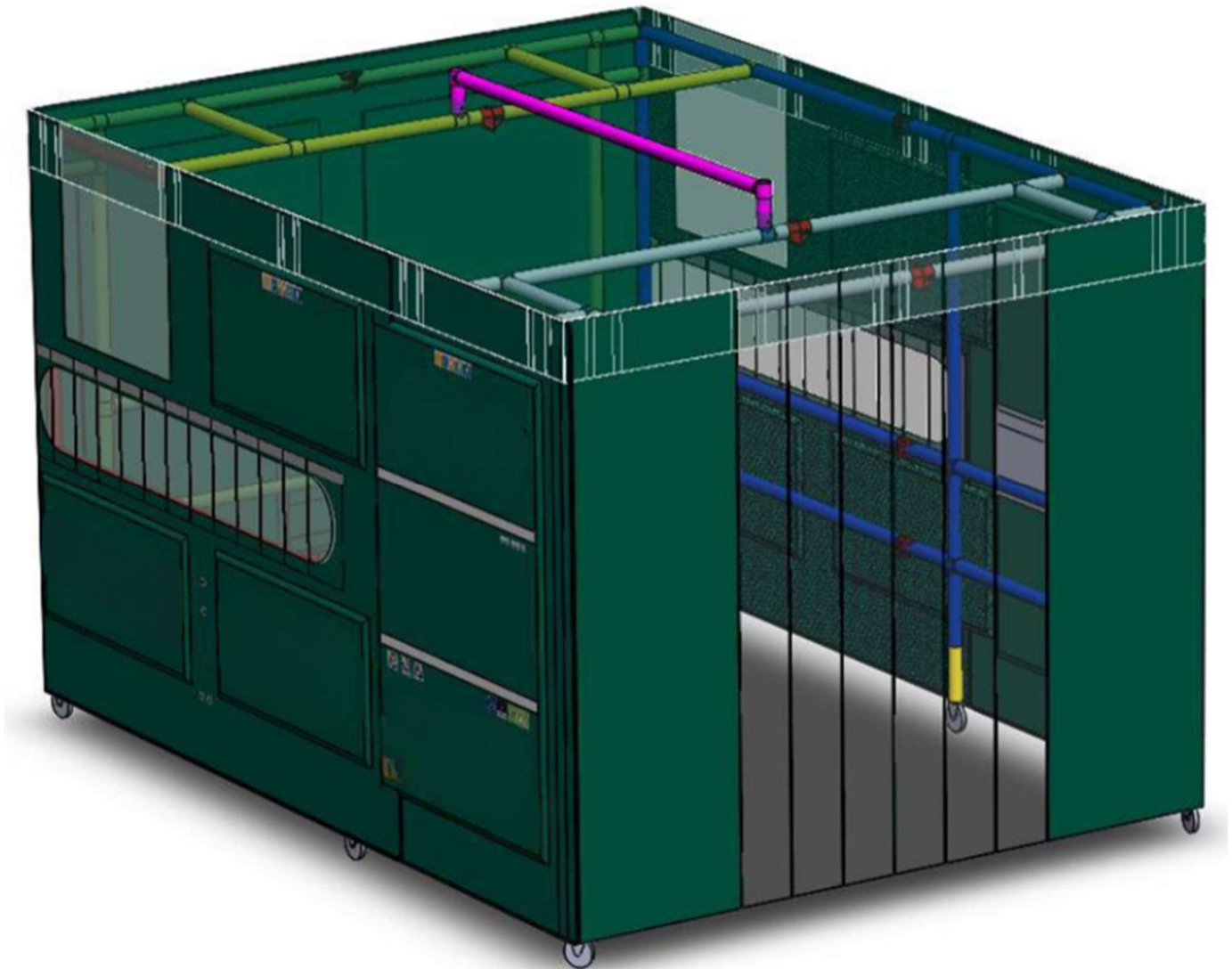
STAGE 7 - ROOF PLACEMENT



Place the roof over the structure and attach it the barriers all the way around using the Velcro.

Note: Adjust the frame height by turning the wing nuts on the wheels to work with your cutting bench.

STAGE 8 - ROOF PLACEMENT



From inside the enclosure place the **PINK** roof raising brace into place and insert the pins to secure it in place.

Your **Control Hire Cutting Station** is now set up.

For further assistance please contact your Sales Representative or our office on **(02) 8610 5677**.