

HIGH QUALITY, AFFORDABLE, VERSATILE MOTORISATION FOR ROLLER SHUTTERS & INTERNAL BLINDS



SIMU T3.5 240 VOLT WIRED STANDARD TUBULAR MOTOR



QUIET AND COMPACT SIZE

Ideal for the motorisation of small roller shutters, the T3.5 is only 414mm in overall length for the 4Nm version, and 470mm for the 3Nm, 6Nm and 9Nm versions. For the motorisation of internal blinds, the 3Nm model is ideal for high speed operating at 25rpm. The T3.5 motor is quiet and very energy efficient.

FOUR LIFTING CAPACITIES

The high performance T3.5 is available in 4 different torques (3Nm, 4Nm, 6Nm, 9Nm) allowing the lift of roller shutters and internal blinds up to 25kg.

STURDY, QUALITY CONSTRUCTION

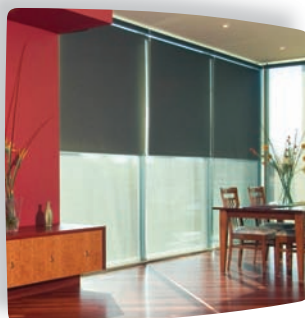
SIMU tubular motors are made in France and are reputed for high quality and reliability.

Other features include:

- Easy to set and accurate manual end-limit system
- Thermal cut-out protection system
- Suitable for a wide range of adaptations and tube sizes.

UPGRADE WITH REMOTE CONTROL

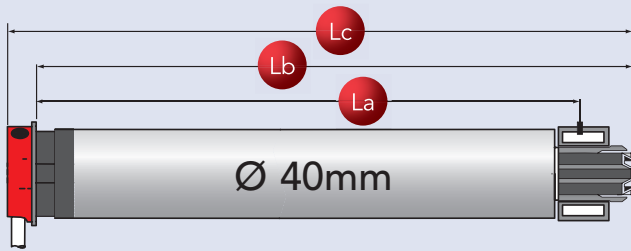
The T3.5 can be equipped with SIMU Hz Radio Remote Control Technology (using the Hz receiver) and making it compatible with all SIMU automation devices.



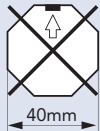
CW PRODUCTS
HOME AUTOMATION & ROLLER SHUTTERS



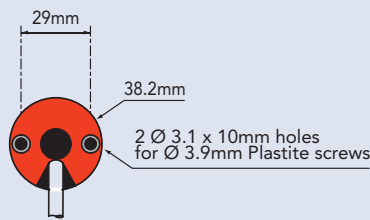
MOTOR DIMENSIONS



- La** : Length between the end and the drilling point of the tube
- Lb** : Adapted motor size in the tube
- Lc** : Total motor length



Caution, this motor is not compatible with octagonal 40 tubes with internal seam.



MODEL NUMBERS & TECHNICAL SPECIFICATIONS

Product Code	Model Number	Torque (Nm)	Speed (rpm)	Power (W)	Current (A)	La (mm)	Lb (mm)	Lc (mm)
30-999-303	T3.5 - 3/25	3	25	80	0.40	433	453	470
30-999-304	T3.5 - 4/12	4	12	65	0.35	377	398	414
30-999-302	T3.5 - 6/12	6	12	80	0.40	433	453	470
30-999-301	T3.5 - 9/12	9	12	100	0.50	433	453	470

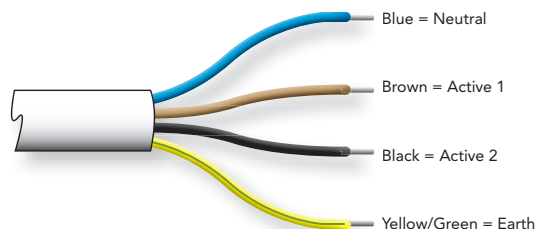
GENERAL T3.5 TECHNICAL SPECIFICATIONS

Power supply	240 Volts - 50 Hz
Thermal cut-out	4 minutes
Progressive end-limit switch capacity	40 turns
Protection index	IP 44
Ambient temperature of use	from -10°C to +40°C And exceptionally: from -20°C to +70°C
Power supply cable	230V - 4 x 0.75mm ² wires - white HO5 VVF, - 2.5m length
Base diameter for round tube	Ø 40 x 1.5mm
Motor head thickness	13mm

Installation Note: Multiple motors cannot be wired to the same switch. A group controller is necessary when operation of 2 or more motors is required from 1 control point. Motors must be wired by a certified electrician. Horizontal mount only. Mounting brackets, crowns and driving wheels to suit tube size must be used with this motor.

General Note: All photos for illustrative purposes only. Technical specifications are correct at time of printing and may change without notice.

MOTOR WIRING CONNECTIONS



INTERNATIONAL STANDARDS



Exclusively distributed in Australia by **CW Products**
 126-138 Port Road Alberton South Australia 5014
Ph: (08) 8341 0120 **Fax:** (08) 8341 1750
Email: info@cwproducts.com.au **Web:** www.cwproducts.com.au

