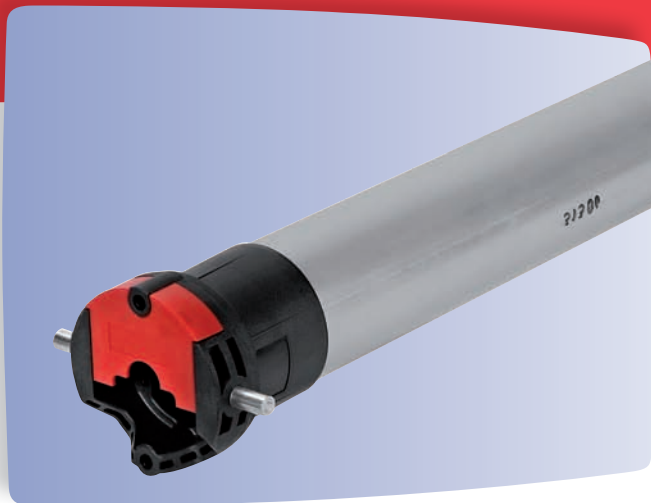


# HIGH QUALITY, VERSATILE MOTORISATION FOR THE REMOTE CONTROL OF ROLLER SHUTTERS, INTERNAL BLINDS, EXTERNAL BLINDS, AWNINGS & PROJECTION SCREENS



## **SIMU T5 Hz02** 240 VOLT TUBULAR MOTOR WITH INTEGRATED RADIO RECEIVER



### **INTELLIGENT, QUIET AND VERSATILE**

Completely integrated with SIMU's advanced Hz Radio Remote Control Technology, the T5 Hz02 range of tubular motors makes installing a breeze. End-limit positions are easily programmed via your remote control, eliminating any need for accessing the motor head. These versatile motors are quiet and very energy efficient. All feature an intermediate/favourite position feature that is easily set/modified directly from your remote.

### **FIVE LIFTING CAPACITIES**

The high performance T5 Hz02 is available in 5 different torques (8Nm, 15Nm, 25Nm, 35Nm, 50Nm) allowing the lift of a wide range of applications.

### **STURDY, COMPLETELY INTEGRATED, QUALITY CONSTRUCTION**

SIMU tubular motors are made in France and are reputed for high quality and reliability.

Other features include:

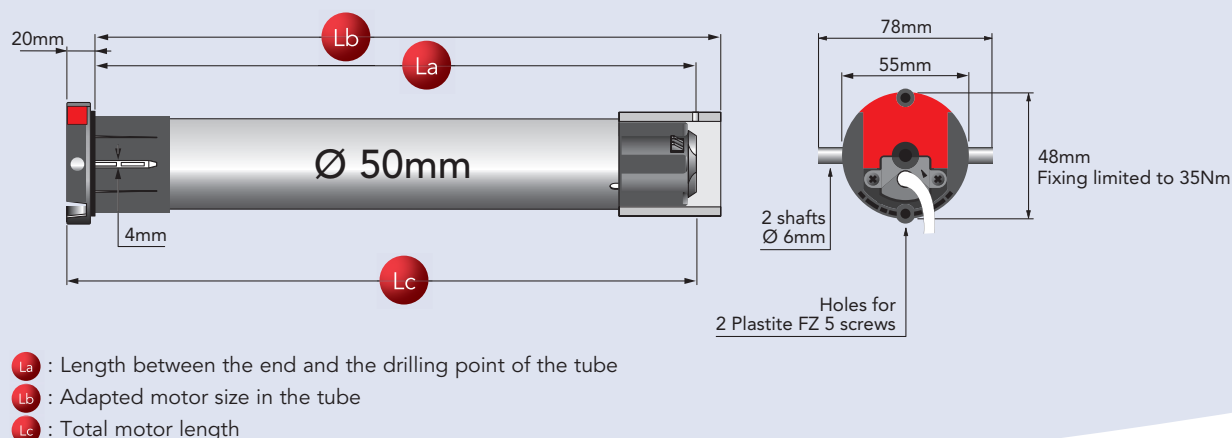
- Integrated SIMU Hz radio remote control receiver
- Easy to set and accurate remote control end-limit system
- Safe & secure rolling code radio system with over 16 million possible combinations
- Powerful radio remote control range of up to 200m in free field and 20m between 2 concrete walls
- Thermal cut-out protection system
- Suitable for a wide range of adaptations and tube sizes.



**CW PRODUCTS**  
HOME AUTOMATION & ROLLER SHUTTERS



## MOTOR DIMENSIONS



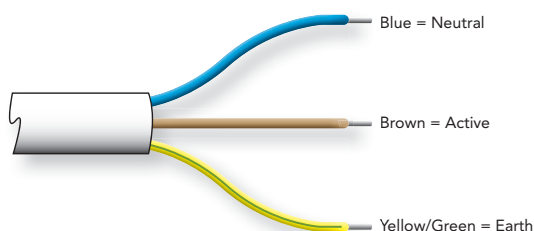
## MODEL NUMBERS & TECHNICAL SPECIFICATIONS

Product Code	Model Number	Torque (Nm)	Speed (rpm)	Power (W)	Current (A)	La (mm)	Lb (mm)	Lc (mm)
30-902-508	T5 Hz02 - 8/17	8	17	100	0.45	590	603	611
30-902-515	T5 Hz02 - 15/17	15	17	140	0.65	660	673	681
30-902-525	T5 Hz02 - 25/17	25	17	170	0.80	660	673	681
30-902-535	T5 Hz02 - 35/17	35	17	240	1.10	660	673	681
30-902-550	T5 Hz02 - 50/12	50	12	240	1.10	660	673	681

## GENERAL T5 Hz02 TECHNICAL SPECIFICATIONS

Power supply	240 Volts - 50 Hz
Thermal cut-out	4 minutes
End-limit switch with electronic counting	operating limited to 3 minutes
Protection index	IP 44
Ambient temperature of use	from -10°C to +40°C And exceptionally: from -20°C to +70°C
Power supply cable	230V - 3 x 0.75mm <sup>2</sup> wires - white HO5 VVF, - 2.5m or 5m length
Radio frequency	433.42 MHz
Secure communication	thanks to "Rolling Code" encoding technology which enables more than 16 million combinations
Range <small>Depending on environment and radio pollution</small>	- 200m in free field - 20m between two reinforced concrete walls
Base diameter for round tube	Ø 50 x 1.5mm

## MOTOR WIRING CONNECTIONS



## INTERNATIONAL STANDARDS



Installation Note: Motors must be wired by a certified electrician. Horizontal mount only. Mounting brackets, crowns and driving wheels to suit tube size must be used with this motor. General Note: All photos for illustrative purposes only. Technical specifications are correct at time of printing and may change without notice.

Exclusively distributed in Australia by **CW Products**  
 126-138 Port Road Albion South Australia 5014  
**Ph:** (08) 8341 0120 **Fax:** (08) 8341 1750  
**Email:** info@cwproducts.com.au **Web:** www.cwproducts.com.au

