



interstuhl

## UPis1 Stool

UPis1 brings movement into day-to-day work. The functional stool and standing aid are intuitive to use and can be relied upon by permanent occupiers and temporary visitors alike, to offer support in spontaneous conversations, workshops, meetings or brainstorming sessions. The UP makes just as good an impression at home or at school, inspiring with the flexibility of its usage and its colourful design.



Design  
Manufacture  
Create

## Features

- Flexible seating solution and NEW: Flexible standing aid
- Promotes movement and health
- Standard Edition infinitely height-adjustable (450 – 630 mm)
- Junior Edition for children from their first school year (infinitely height-adjustable between 375 and 490 mm)
- NEW: STAND-UP standing aid (infinitely height-adjustable from 590–845 mm)

- In six colours: Deep grey, smart white, fresh yellow, soft red, ice blue and red
- Rounded and non-slip floor stand
- Integrated carrying edge below the seat
- Practical and stylish strap for height adjustment and transportation

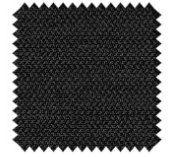
## Cushion Options

- Matching cushion available in 14 colours
- 320 mm Ø

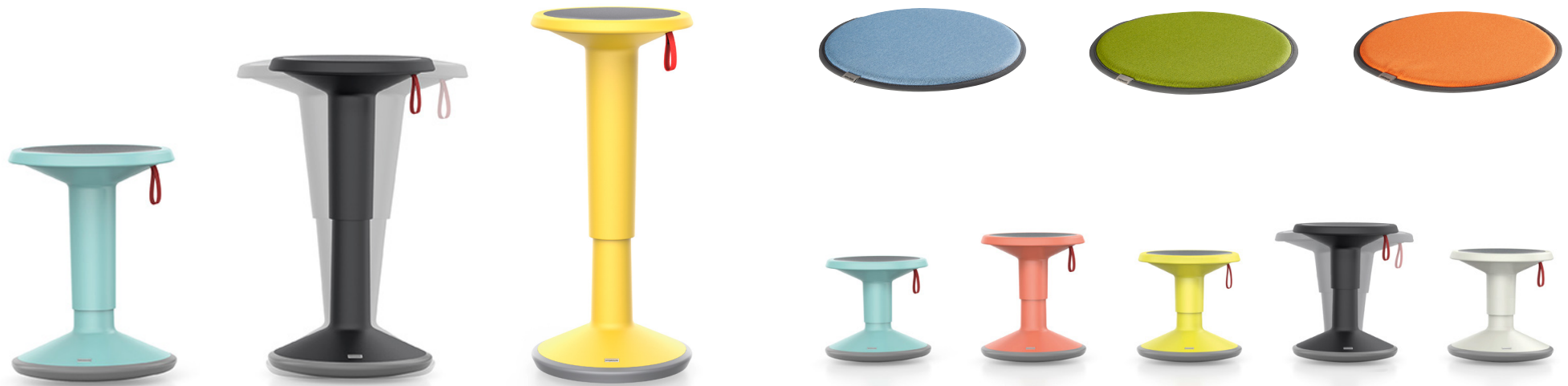
## Warranty

- 10 years

## Cushion Material



ERA



For a complete range of product specifications for UPI1 stools and accessories

## Get In Touch

### Sydney Office:

U5 / 19 Unwins Bridge Road,  
St Peters NSW 2044  
Phone : 02 9517 4093

### Melbourne Office:

101 Moray Street,  
South Melbourne VIC 3205  
Phone : 0429 654 292

Website : [www.mn8design.com](http://www.mn8design.com)

Email : [sales@mn8design.com](mailto:sales@mn8design.com)