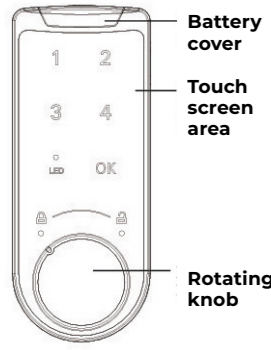


**P152 Touch Pad Lock  
Standard Use & One Time Use  
User Manual**



Design  
Manufacture  
Create



**P152-Keyless locking system**

**INTRODUCTION**

- 1-8 digit user code
- 87,380 possible codes
- User code is stored when battery power is lost or removed
- Short warning tone for low battery
- Tampering alarm

**APPLICATION**

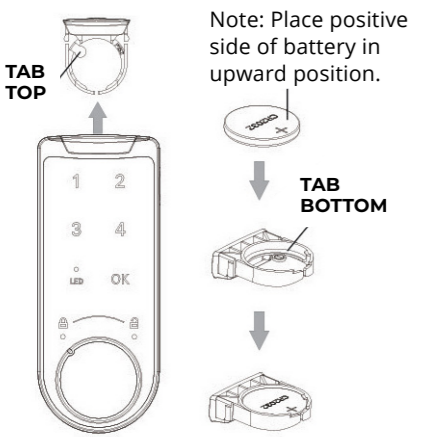
Wood and Metal materials from 0.6mm - 22mm.

**FUNCTION**

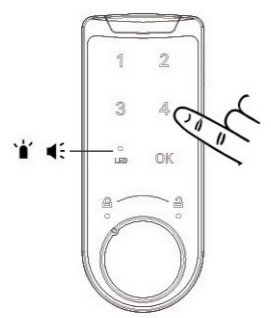
Standard use - Enter user code and it remains until rest.  
One time use - Enter user code to lock and unlock only once.

**BATTERY INSTALLATION**

1. Slide battery cover open and place battery in holder
2. Confirm proper battery installation.



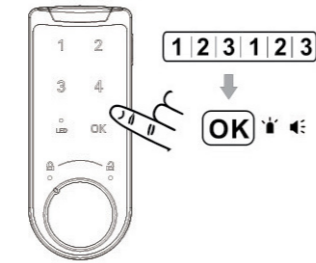
- Press numbers on touch pad
- Listen for "Beep" tone
- Look for LED indicator light



**INSTRUCTIONS - STANDARD USE**

**UNLOCK**

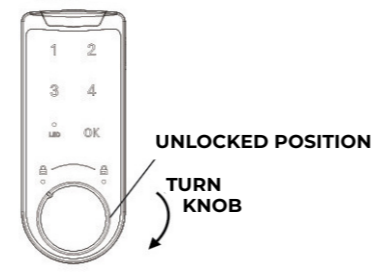
1. Key in 123123 then "OK" listen for long "BEEP"



**Factory default code is 123123**

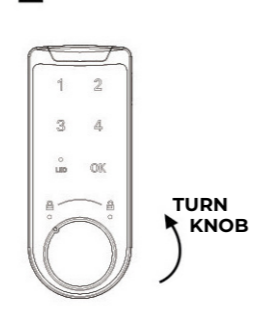
**UNLOCK**

2. Turn knob clockwise to "U" position. Lock is now unlocked.

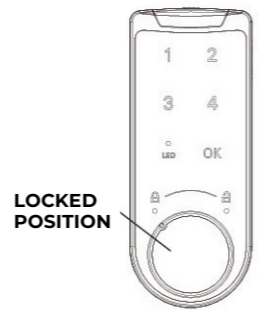


**LOCK**

1. Turn knob counter clockwise to "L" locked position.



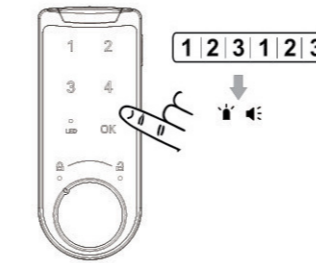
2. Knob is now in a fixed locked position.



**INSTRUCTIONS - ONE TIME USE**

**UNLOCK**

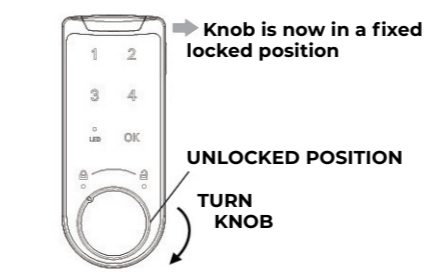
1. Key in 123123 then "OK" listen for long "BEEP"



**Factory default code is 123123**

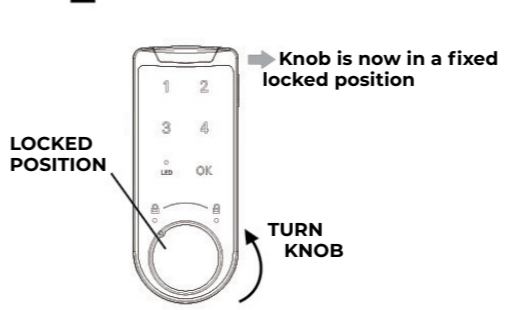
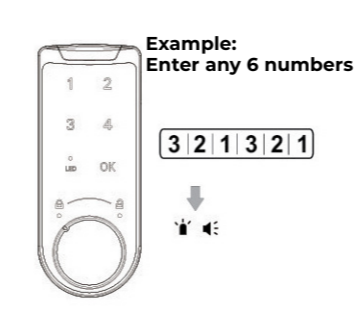
**UNLOCK**

2. Turn knob clockwise to "U" position. Lock is now unlocked.



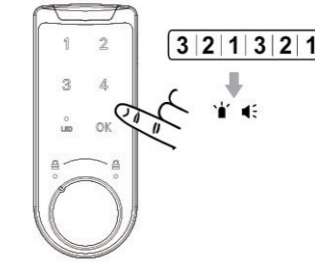
**LOCK - Set new code - CODE SETTING MUST BE 6 DIGITS LONG**

1. Key in code 321321 listen for long "BEEP"
2. Turn knob counter clockwise to "L" locked position.



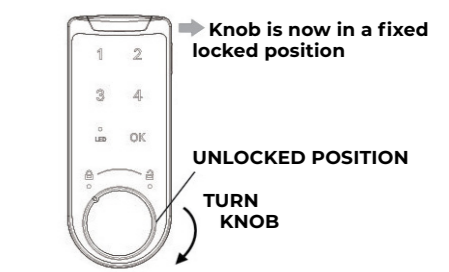
**UNLOCK**

1. Key in 321321 then "OK" listen for long "BEEP"



**UNLOCK**

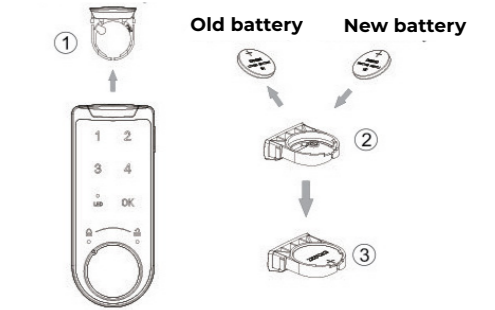
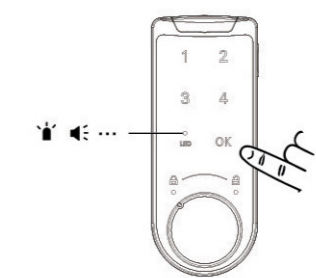
2. Turn knob clockwise to "U" position. Lock is now unlocked.



•NOTE: Code is good for one use only. Repeat process for new code•

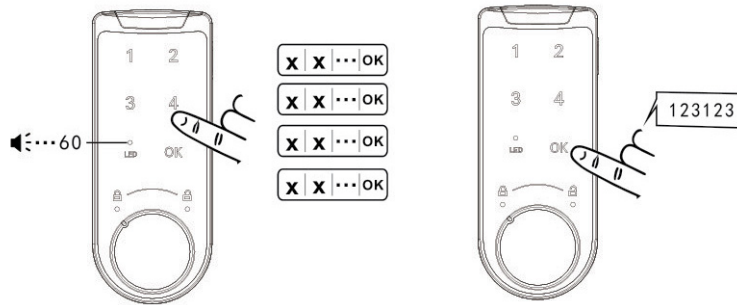
**CHANGE BATTERY**

1. Battery change required when "BEEP, BEEP, BEEP" sounds three times after unlocking.
2. Follow below steps to change the battery.



### ALARM FUNCTION

1. Continuous alarm sounds for 60 seconds when code is incorrectly entered 4 times.
2. Enter correct code to silence the alarm.



### NOTE:

- The digital lock uses one button battery (model: Cr2032). When the battery is full, it can be used for one year.
- Three consecutive "BEEP, BEEP, BEEP" tones will indicate low battery life when correct code is entered.
- 200 operating cycles remain when "BEEP, BEEP, BEEP" tone begins.
- Replace battery to ensure proper operations of lock and before the lock becomes inoperable.
- The standard battery is the commissioning battery, this battery will have different performance in supplying power due to storage and transportation. Therefore, it is only used for the first time to test the product. If low battery, replace it as soon as possible.

### CODE SETTING (Can be set 1-8 digits long)

Example:

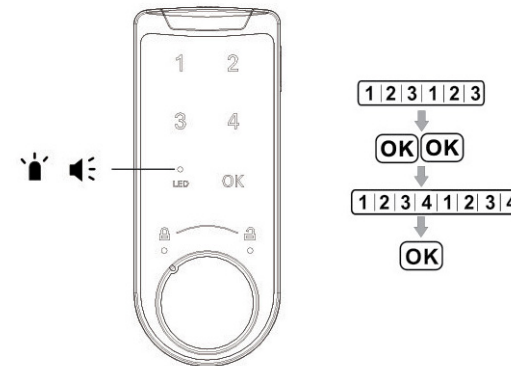
Change factory default code "123123" into new code "1231234"

1. Enter code 1-2-3-1-2-3  
Press OK + OK (OK x 2)  
Enter new code 1-2-3-4-1-2-3-4  
Press OK (OK x 1)  
Listen for longer "BEEP" tone

2. Code is now reset

1 2 3 4 1 2 3 4 = ✓

- Remember 12341234
- Securely store new code



## Get In Touch

### Sydney Office:

6 -10 Phillips Road,  
Kogarah NSW 2217  
Phone : 02 9517 4093

### Melbourne Office:

101 Moray Street,  
South Melbourne VIC 3205  
Phone : 0429 654 292

Website : [www.mn8design.com](http://www.mn8design.com)

Email : [sales@mn8design.com](mailto:sales@mn8design.com)