



interstuhl

UPis1 Stool

UPis1 brings movement into day-to-day work. The functional stool and standing aid are intuitive to use and can be relied upon by permanent occupiers and temporary visitors alike, to offer support in spontaneous conversations, workshops, meetings or brainstorming sessions. The UP makes just as good an impression at home or at school, inspiring with the flexibility of its usage and its colourful design.



Design
Manufacture
Create

Features

- Flexible seating solution and NEW: Flexible standing aid
- Promotes movement and health
- Standard Edition infinitely height-adjustable (450 – 630 mm)
- Junior Edition for children from their first school year (infinitely height-adjustable between 375 and 490 mm)
- NEW: STAND-UP standing aid (infinitely height-adjustable from 590–845 mm)

- In six colours: Deep grey, smart white, fresh yellow, soft red, ice blue and red
- Rounded and non-slip floor stand
- Integrated carrying edge below the seat
- Practical and stylish strap for height adjustment and transportation

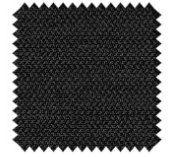
Cushion Options

- Matching cushion available in 14 colours
- 320 mm Ø

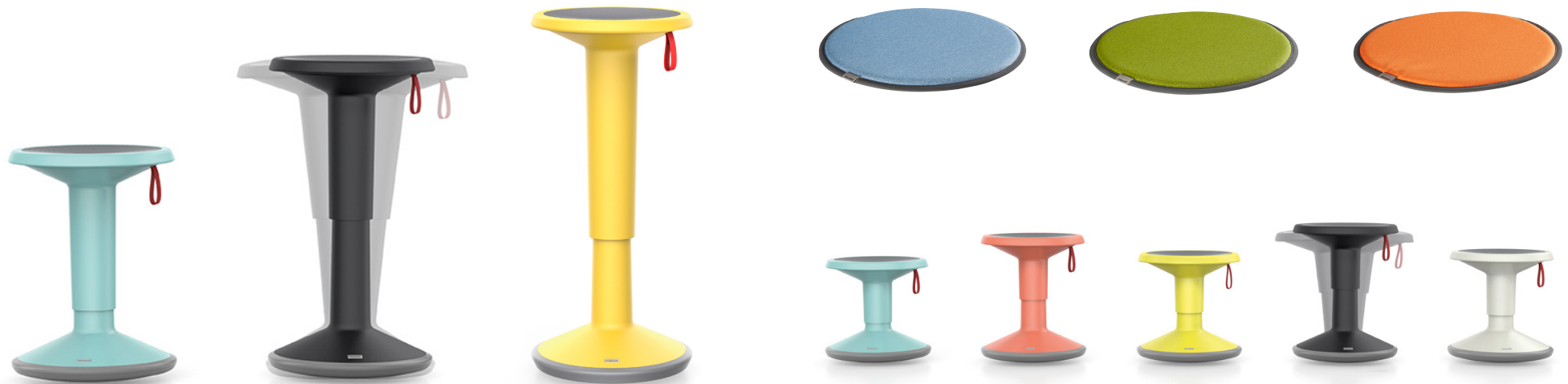
Warranty

- 10 years

Cushion Material



ERA



For a complete range of product specifications or UPi1 stools and accessories

Get In Touch

Sydney Office:

6-10 Phillips Road,
Kogarah NSW 2217

Melbourne Office:

101 Moray Street,
South Melbourne VIC 3205

Call 1300 362 628

Website : www.mn8design.com

Email : sales@mn8design.com