

CX250C Excavator | 2017



CX250C Excavator Specifications

Technical Data

Base operating weight - approximate

Base – (with 600 mm grouser shoe)	25 100 kg
With 3.00 m Arm, 1.0 m ³ bucket, 600 mm grouser shoe, operator, lubricant, coolant, full fuel tank and top guard OPG level 2	

Engine data

Model	ISUZU GH-4HK1X
Type	Water-cooled, 4-cycle diesel, 4-cylinder in line, Electronically controlled, high pressure common rail system, variable geometry turbocharger, air cooled intercooler, DPD system with auto-regeneration.
Emission certified	Tier IV Interim
Maximum torque	ISO 9249 (net) 621 Nm @ 1800 min ⁻¹
Horsepower	ISO 9249 (net) 132 kw @ 2000 min ⁻¹
Bore & stroke	115 x 125 mm
Displacement	5.19 L
Voltage	24 Volt
Alternator	50 Amp
Batteries (two 12 volt)	92 Ah/5HR

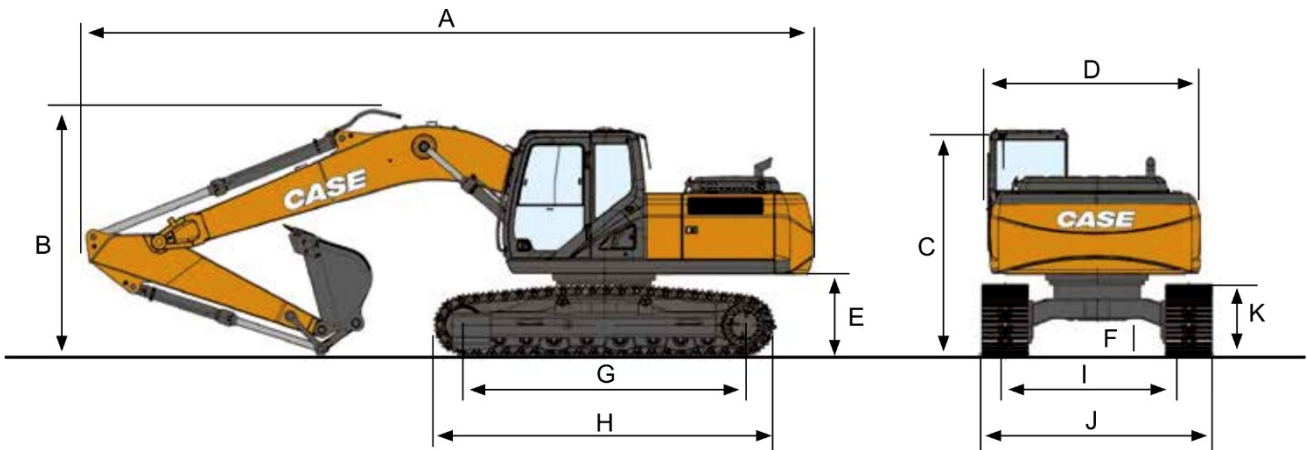
Undercarriage

Travel motor	Variable displacement axial piston motor, automatic travel speed shifting
Brake	Mechanical disc brake
Hydraulic service brake	Brake valve
Travel speeds	
High	5.5 km/h
Low	3.5 km/h
Drawbar pull	201 kN
Gradeability	35°
Number of carrier rollers (each side)	2
Number of track rollers (each side)	9
Number of shoes (each side)	51
Type of shoe	Triple grouser shoe
Link pitch	190 mm
Width of shoe	800 mm (S.T.D)



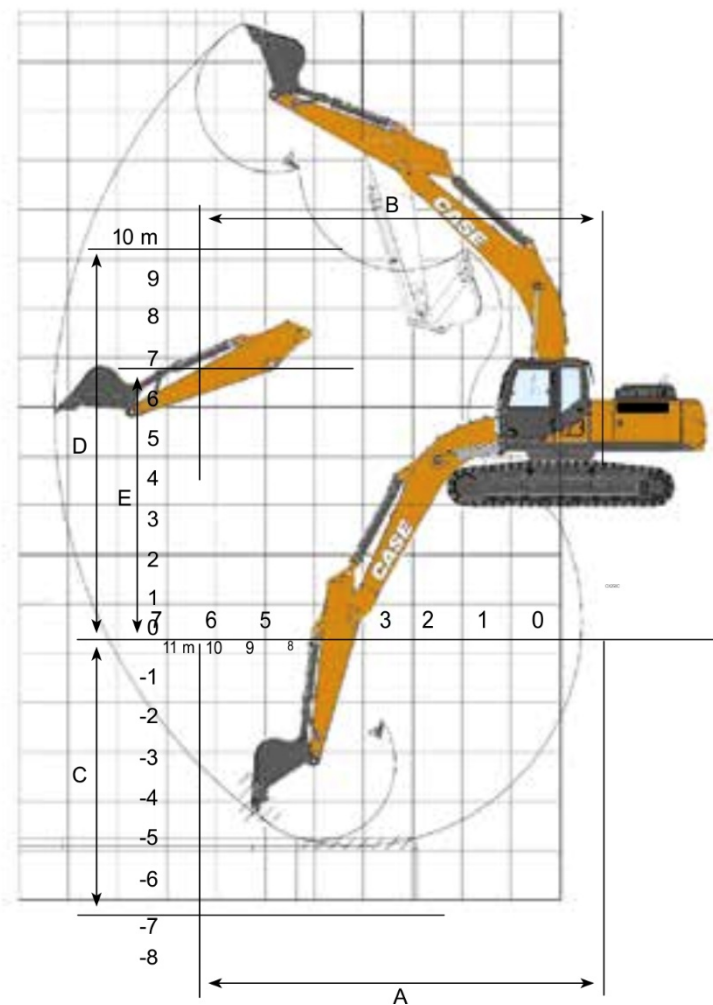
General Dimensions (with 3.00 m Arm)

Overall length (w/out attachment)	5 270 mm	F = Minimum ground clearance	460 mm
A = Overall length (with attachment)	9 880 mm	G = Wheel base (centre to centre of wheels)	3 840 mm
B = Overall height (to top of boom)	3 200 mm	H = Crawler overall length	4 650 mm
C = Overall height (to top of cab)	3 010 mm	I = Track gauge	2 590 mm
D = Upper structure overall width	2 770 mm	J = Undercarriage overall width (with 800 mm shoes)	3 190 mm
E = Clearance height under upper structure	1 100 mm	K = Crawler tracks height	940 mm



Performance data (with 3.00 m Arm)

A = Maximum reach at GRP	10 100 mm	D = Maximum digging height	9 760 mm
B = Maximum reach	10 280 mm	E = Maximum dumping height	6 760 mm
C = Maximum digging depth	6 900 mm	Bucket Radius	1 570 mm
Boom length	5 850 mm	Bucket wrist action	175°
Arm digging force	120 kN	Bucket digging force	162 kN
Arm digging force with Power Boost	129 kN	Bucket digging force with Power Boost	174 kN



Lifting Capacity

CX250C Standard arm 3 m, 1.0 m³ bucket (790 kg) bucket, 600 mm shoes, max reach 9.90 m

	REACH														
	1.5 m		3.0 m		4.5 m		6.0 m		7.5 m		9.0 m		At max reach		
	Front	360°	Front	360°	Front	360°	Front	360°	Front	360°	Front	360°	Front	360°	m
9.0 m									2 240*	2 240*			2 120*	2 120*	7,57
7.5 m									3 300*	3 300*			1 890*	1 890*	8,85
6.0 m									4 330*	4 330*	3 480*	3 270	1 790*	1 790*	9,68
4.5 m									5 110*	4 510	4 290*	3 200	1 770*	1 770*	10,18
3.0 m					8 700*	8 700*	6 850*	6 250	5 800*	4 290	4 670	3 080	1 810*	1 810*	10,41
1.5 m			13 410*	13 410*	11 110*	9 250	8 110*	5 860	6 170	4 060	4 530	2 950	1 910*	1 910*	10,4
0 m	4 270*	4 270*	9 700*	9 700*	12 710*	8 590	8 580	5 500	5 950	3 860	4 410	2 840	2 100*	2 100*	10,16
-1.5 m	7 650*	7 650*	11 290*	11 290*	13 240*	8 290	8 330	5 290	5 810	3 730	4 350	2 780	2 400*	2 400*	9,68
-3.0 m	9 810*	9 810*	14 490*	14 490*	13 060*	8 310	8 300	5 270	5 810	3 740			2 900*	2 840	8,94
-4.5 m	14 320*	14 320*	17 920*	17 210	12 140*	8 490	8 390	5 420	5 930	3 910			3 860*	3 550	7,86
-6.0 m			14 120*	14 120*	9 730*	8 720	6 580*	5 620					5 760*	5 150	6,3

* Lift capacities are taken in accordance with SAE J1097 / ISO 10567 / DIN 15019-2

Lift capacities shown in kg do not exceed 75% of the tipping load or 87% of the hydraulic lift capacity

Capacities that are marked with an asterisk (*) are hydraulic limited

If the machine is equipped with a quick coupler, subtract the weight of the quick coupler from the load shown in the table to calculate the real lift capacity

