



# MTPConnect

Australia's Life Sciences  
Innovation Accelerator

**TTRA** TARGETED TRANSLATION  
RESEARCH ACCELERATOR  
DIABETES + CARDIOVASCULAR DISEASE

## INFORMATION SESSION: TTRA Drugs and Devices

Tuesday 8 October 2024 | 12:30PM – 1.45PM AEDT



Australian Government  
Department of Industry,  
Science and Resources

**MTPConnect**



Championing a sector-led approach to accelerating the growth of the  
medical technology, biotechnology and pharmaceutical ecosystem in Australia





Thanks for connecting!

Our webinar will be starting shortly...

# Connect to the Australian MTP Sector



# Connect with the MTPConnect TTRA team



**Lauren Kelly**

[lauren.kelly@mtpconnect.org.au](mailto:lauren.kelly@mtpconnect.org.au)



**Dr Dharmica Mistry**

[dharmica.mistry@mtpconnect.org.au](mailto:dharmica.mistry@mtpconnect.org.au)



**Dr Mana Liao**

[mana.liao@mtpconnect.org.au](mailto:mana.liao@mtpconnect.org.au)



**Dr Erin McAllum**

[erin.mcallum@mtpconnect.org.au](mailto:erin.mcallum@mtpconnect.org.au)



For information please contact  
[ACCELERATOR@MTPCONNECT.ORG.AU](mailto:ACCELERATOR@MTPCONNECT.ORG.AU)



# MTPConnect

Australia's Life Sciences  
Innovation Accelerator

## TTRA TARGETED TRANSLATION RESEARCH ACCELERATOR

DIABETES + CARDIOVASCULAR DISEASE

### INFORMATION SESSION: TTRA Drugs and Devices

Tuesday 8 October 2024 | 12:30PM – 1.45PM AEDT



Australian Government  
Department of Industry,  
Science and Resources

#### MTPConnect

→ Championing a sector-led approach to accelerating the growth of the medical technology, biotechnology and pharmaceutical ecosystem in Australia



# Welcome & Acknowledgement of Country



**Lauren Kelly**  
Senior Director | TTRA Program

# Acknowledgement of Country

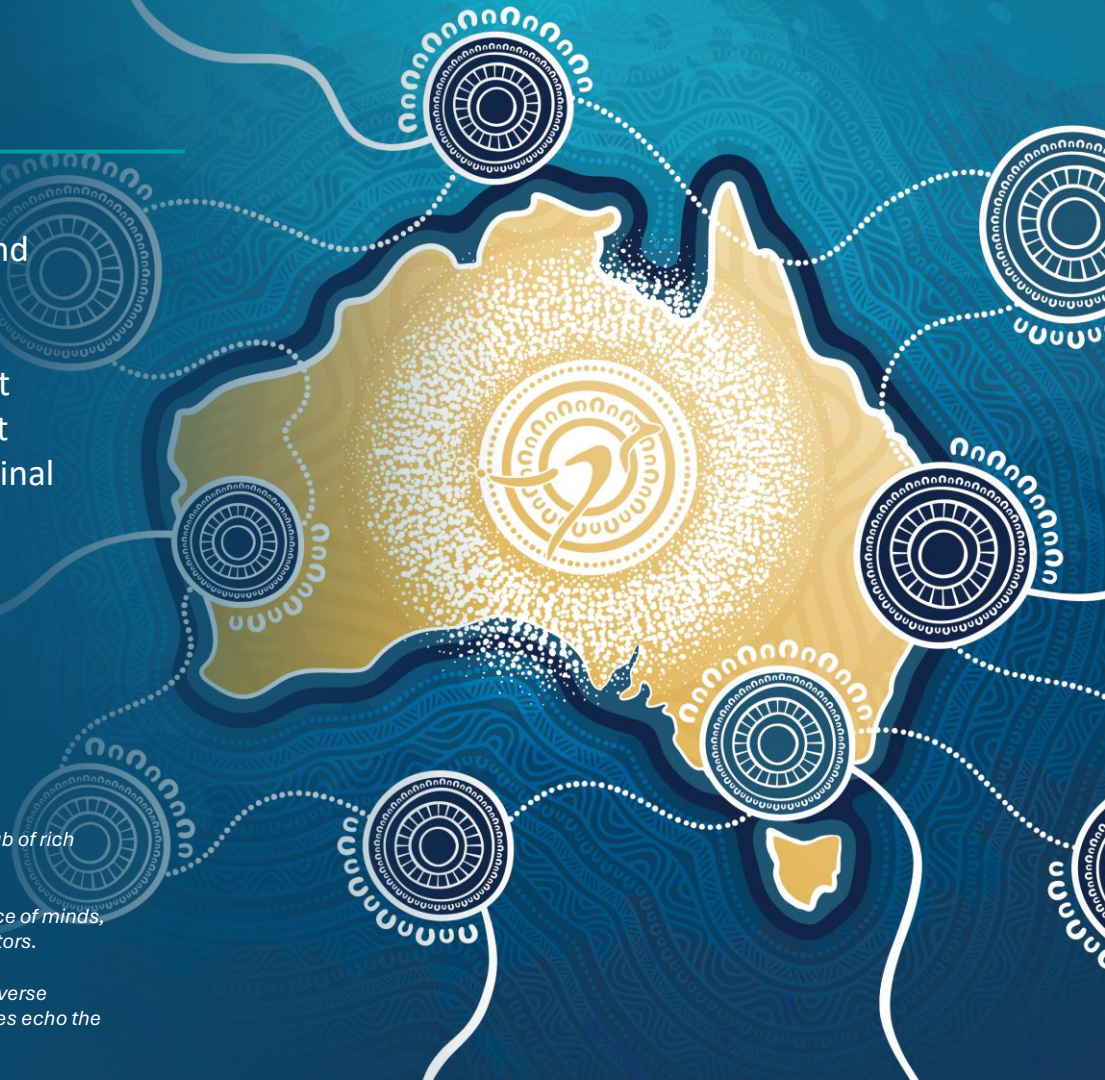
MTPConnect recognises the First Peoples of this nation and their ongoing connection to culture and Country. We acknowledge Aboriginal and Torres Strait Islander Peoples as the Traditional Owners, Custodians and Lore Keepers of the world's oldest living culture and pay respects to their Elders past and present and extend that respect to all Aboriginal and Torres Strait Islander people.

**Jordan Lovegrove,**  
Unified Collaboration & Innovation (2024)

*Jordan Lovegrove, Ngarrindjeri artist encapsulates the essence of Australia as a hub of rich biodiversity, scientific innovation, healing, and unified collaboration.*

*At its heart, the artwork features a large meeting place symbolising the convergence of minds, representing the collaborative spirit embodied by Australian scientists and innovators.*

*Throughout the piece, smaller gathering spaces dot the landscape, symbolising diverse communities and individuals uniting in collaboration. These smaller meeting places echo the broader theme of coming together for shared goals and mutual growth.*



# Housekeeping

## QUESTIONS

- Please enter questions in the **Q&A BOX** (*not the CHAT box*)
- You can **SUBMIT ANONYMOUSLY** – Just click the checkbox
- **Have the same question as someone else?**  
You can **UPVOTE** a question by clicking the **THUMBS UP**

## RECORDING

- This webinar will be recorded and slides published **by Friday** – We'll email you when they're ready!
- View the **ON-DEMAND VIDEO** at [mtpconnect.org.au/webinars](https://mtpconnect.org.au/webinars)
- Listen by subscribing to **THE MTPCONNECT PODCAST**  
Available on Apple Podcasts, Spotify and on our website



For information please contact  
[ACCELERATOR@MTPCONNECT.ORG.AU](mailto:ACCELERATOR@MTPCONNECT.ORG.AU)

# MTPConnect's TTRA Team



## Lauren Kelly

Leader of complex multinational translational research programs.

- Governance
- Industry engagement
- Preclinical and Clinical R&D
- Diabetes, obesity & cardiovascular disease research and drug discovery and development
- Diagnostic development



## Dr Dharmica Mistry

Impact driven scientist and entrepreneur, commercialising medtech.

- Cofounder of BCal Diagnostics
- Support of Biotech/Medtech startups
- Research discovery
- Building complex collaborations
- Mentorship



## Dr Mana Liao

Technology commercialisation professional facilitating life sciences innovation.

- Intellectual Property
- Life science investment
- Spin off establishment
- Industry/academic partnerships
- Diabetes, obesity, and metabolism



## Dr Erin McAllum

Biochemist and strategy specialist with a passion for turning ideas into impact.

- Impact evaluation
- Program management
- Bioinorganic chemistry
- Neurodegeneration research
- Pre-clinical drug development

# Introduction

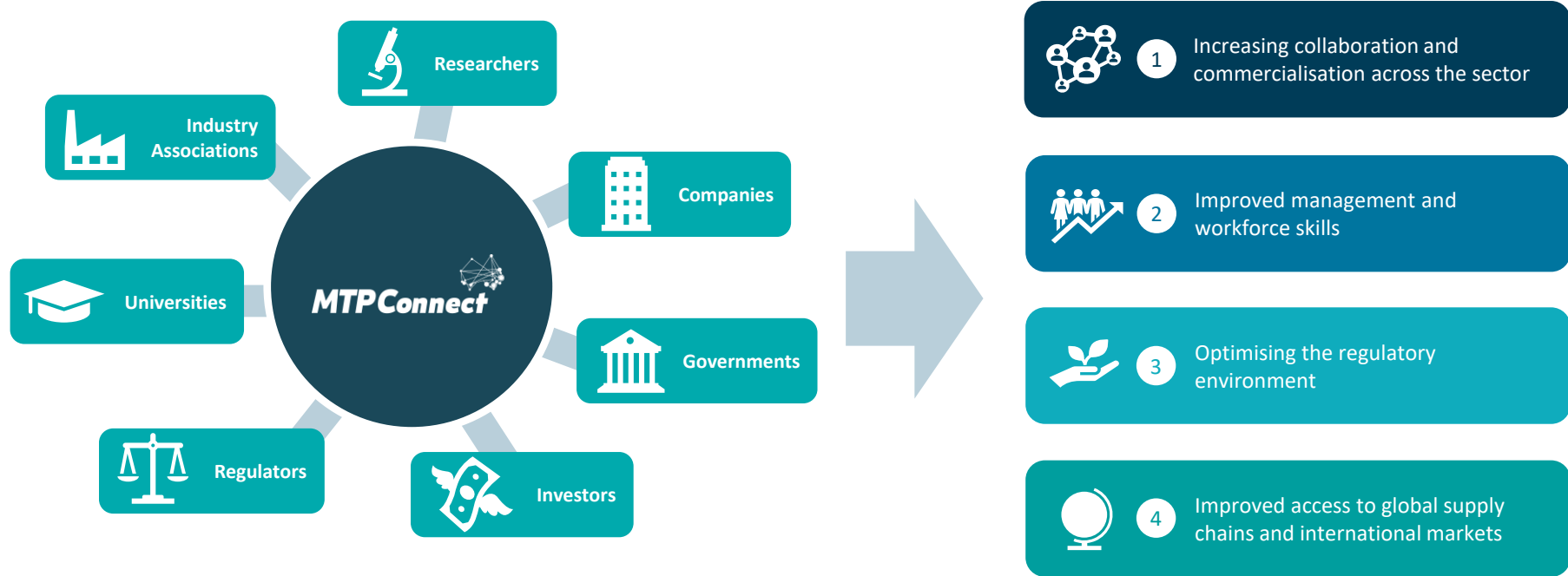
**MTPConnect**

Australia's Life Sciences  
Innovation Accelerator



**Lisa Dubé**  
Chief Operating Officer

# MTPConnect – Our goal is to accelerate the growth of Australia's life sciences sector



# MTPConnect accelerator programs A\$182M

MTPConnect operates accelerator programs to support the development of cutting-edge medical technology, biotechnology and pharmaceutical innovations, with more than A\$182 million invested so far in 200 projects.

## Department of Industry, Science & Resources



Australian Government  
Department of Industry,  
Science and Resources

Growth Centre  
Project Fund

**\$15.6M**

40 Projects

## Department of Health and Aged Care – Medical Research Future Fund



**Biomedical**  
TRANSLATION BRIDGE  
PROGRAM

**\$22.3M**

21 Projects

**BMTH**

**BioMedTech Horizons**  
PROGRAM

**\$45M**

49 Projects

**REDi** DEVELOPING AUSTRALIA'S  
**MTP SECTOR**  
WORKFORCE

**\$32M**

20 Training partners  
46 Training programs

**TTRA** TARGETED TRANSLATION  
RESEARCH ACCELERATOR  
DIABETES + CARDIOVASCULAR DISEASE

**\$47M**

22 Research projects  
2 Research centres



Clinical Translation  
& Commercialisation  
**Medtech**

**\$19.75M**

11 Research Projects

# MTPConnect – \$6.5 Billion Impact

MTPConnect has so far contributed \$1.7 billion flowing into Australia's medical products sector.

The overall economic impact of MTPConnect's activities shows a total attributable return of ~\$6.5 billion<sup>1</sup> – a strong return on investment.

MTPConnect's strategic accelerator initiatives are fostering commercialisation and collaboration for start-ups and SMEs and addressing the skills gaps and key constraints identified across the sector.

MTPConnect is an important innovation accelerator supporting the development and translation of Australia's health and medical research into valuable and clinically important medical products.



<sup>1</sup> KPMG, Economic Impact of Medical Research in Australia, October 2018

# MTPConnect – project outcomes:



1,585

New Technologies  
Invented  
or Progressed



849

New Patent,  
Trademark  
Applications  
and Licences



300

Products  
Launched



2,294

New Jobs Created in  
Awardee Companies  
(years – direct and indirect)



199

New Start-Up  
Companies  
Formed



740,975

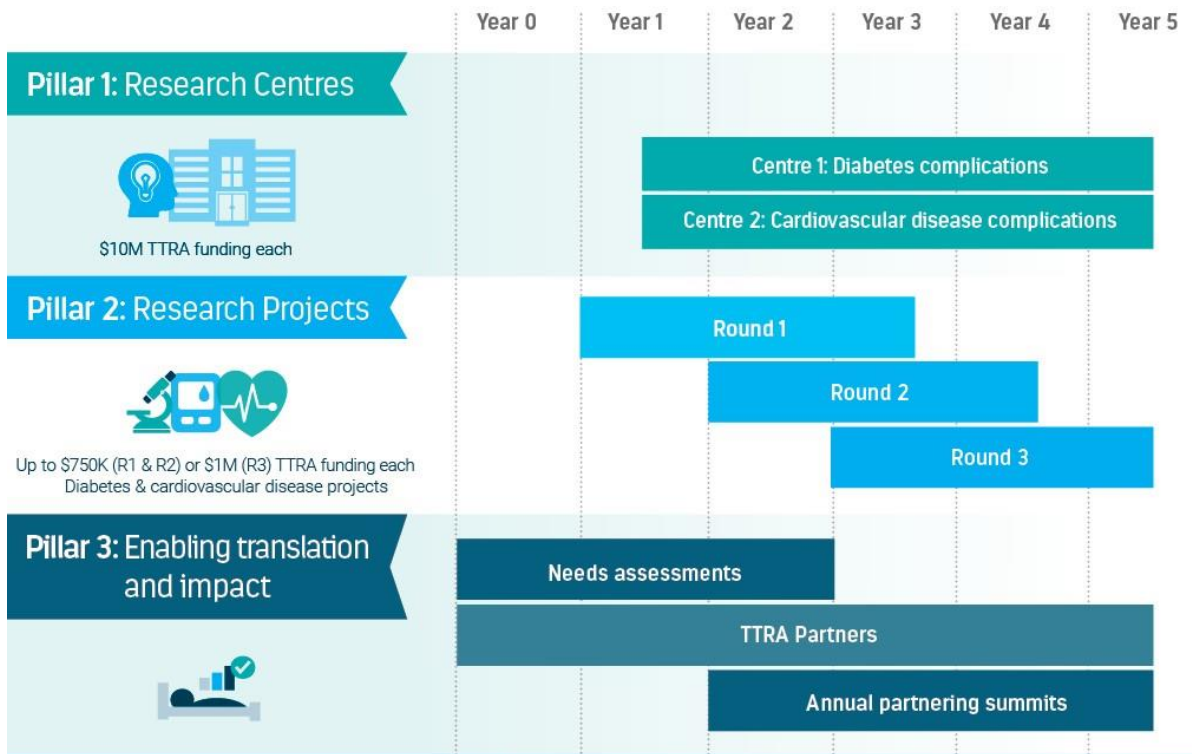
Patients  
Treated

# LET'S GET TO KNOW YOU...



Please answer all POLL questions and hit [SUBMIT](#)

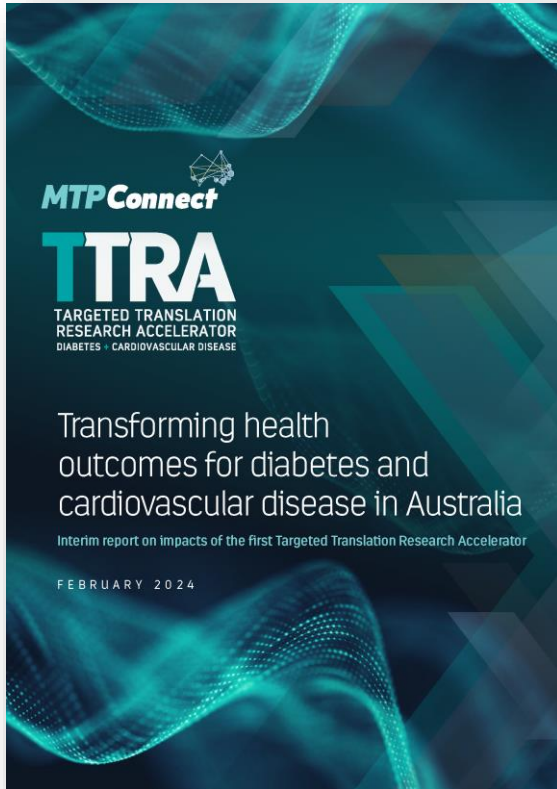
# TTRA for Diabetes & Cardiovascular Disease



## TTRA Partners



# TTRA – Delivering Health and Economic Impact



# TTRA Drugs and Devices



**TTRA**  
TARGETED TRANSLATION  
RESEARCH ACCELERATOR  
DIABETES + CARDIOVASCULAR DISEASE  
Powered by **MTPConnect**

**\$28M Accelerator  
INVESTMENT BACKS  
HOMEGROWN  
INNOVATIONS FOR  
HEART DISEASE &  
DIABETES**



**CSL**



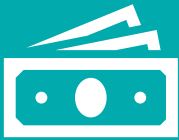
# TTRA Drugs and Devices



**Dr Erin McAllum**  
Associate Director | TTRA Program

# TTRA Drugs and Devices Opportunity Overview

Support small-to-medium enterprises (SMEs), including start-ups and spin-outs, to accelerate into practice innovative preventative, diagnostic, therapeutic and/or disease management **drugs and devices** for diabetes complications and cardiovascular disease.



Up to \$1.5m  
TTRA Investment



42 months  
maximum term



Reach commercial  
value inflection  
point

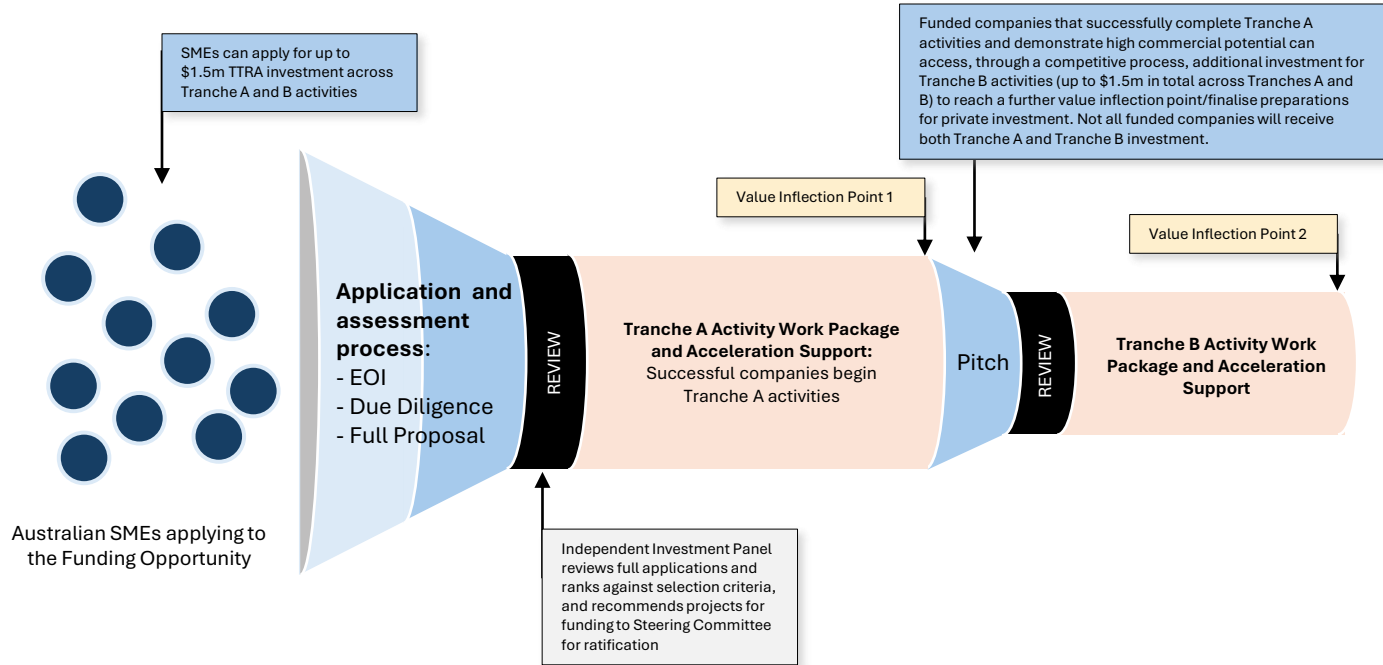


Acceleration support  
incl. mentoring and  
specialist advice



Flagship events

# TTRA Drugs and Devices – MTPConnect’s Accelerator Model



**TRANCHE A: OPEN COMPETITIVE ACCESS TO INVESTMENT**

**TRANCHE B: FUNDED COMPANIES-ONLY  
COMPETITIVE ACCESS TO INVESTMENT**

# Eligibility

Lead applicants must:

- Be a registered Australian-based **for-profit business**
- Be incorporated in Australia
- Have an **Australian Business Number (ABN)**
- Have **less than 200 employees**
- Not be a technology transfer office/mechanism for a university or MRI

Demonstrated capacity to match the **co-contribution** requirement

Product/solution must be a **drug or medical device** that addresses **cardiovascular disease or the complications of diabetes (type 1 or 2)**

Product/solution must meet the **minimum stage of development** requirement

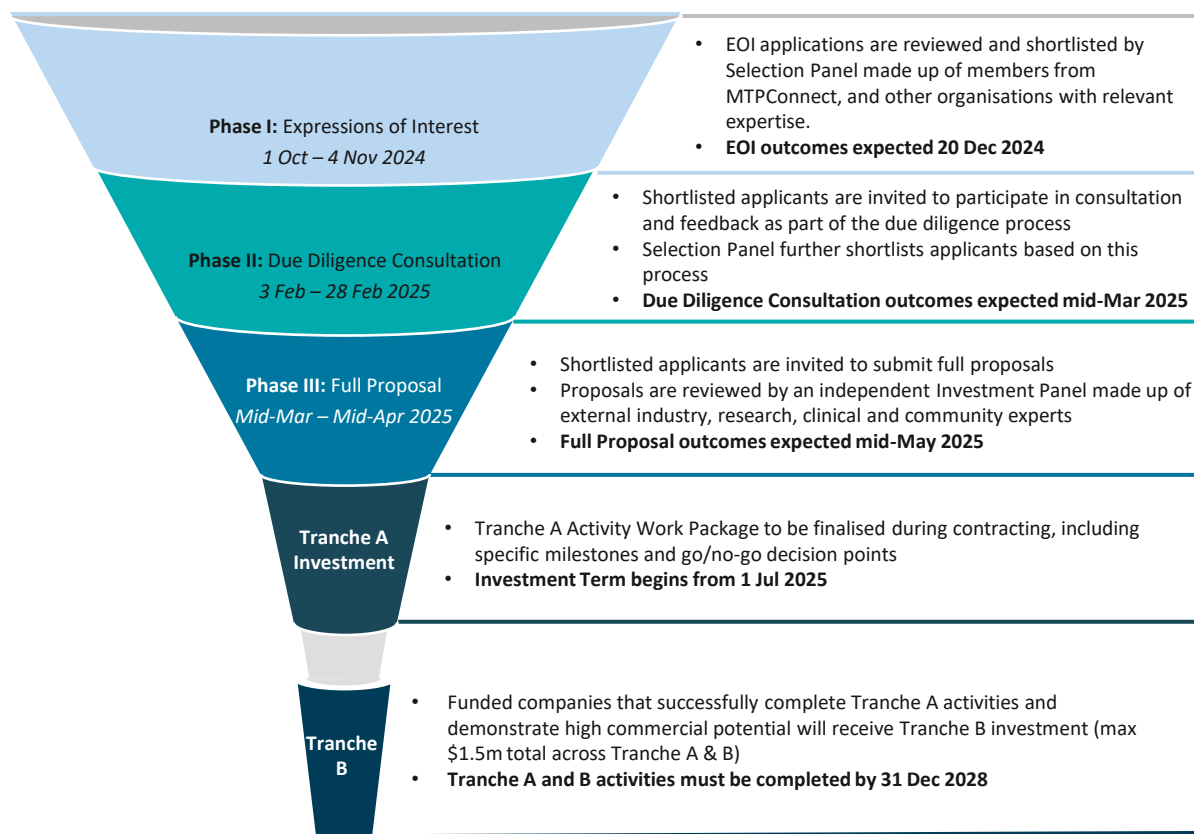
Applicants must **control or have legal right to access and use relevant IP**

- Background IP, Project IP, not infringing on third party IP

# Eligibility: co-contribution requirement

Investment Request	Required <u>Cash</u> Co-Contribution : TTRA funding	Example
\$200,000 - \$500,000	1:4	TTRA Investment = \$450,000 Cash co-contribution = \$112,500 Total Budget = \$562,500
\$500,001 - \$1,000,000	1:2	TTRA Investment = \$850,000 Cash co-contribution = \$425,000 Total Budget = \$1,275,000
\$1,000,001 - \$1,500,000	1:1	TTRA Investment = \$1,350,000 Cash co-contribution = \$1,350,000 Total Budget = \$2,700,700

# TTRA Drugs and Devices application process



# TTRA Drugs and Devices Selection Criteria

Challenge &  
Solution



25%

Technical  
Merit



25%

Project  
Plan



15%

Translation &  
Commercialisation



10%

Team &  
Capabilities



25%

# Panel discussion: what makes a strong application

---



Dr Mana Liao



Dr Perdita Cheshire



Kenny Lean



Renza Scibilia

# Questions?



- Please enter them in the Q&A box
- You can tick the ANONYMOUS checkbox
- UPVOTE existing questions

## Drugs and Devices

TTRA Drugs and Devices Guidelines

Sample Drugs EOI form

Sample Devices EOI form

Info Session Webinar

Apply Now

Expressions of interest open from 1 October 2024. This opportunity is offered by the Commonwealth under the Targeted Translation Research Accelerator (TTRA) for Drugs and Devices which forms part of the Medical Research Future Fund (MRFF).

TTRA Drugs and Devices can provide up to \$1.5 million to help eligible Australian start-ups, spin-outs and SMEs develop innovative preventative, diagnostic, therapeutic and/or disease management drugs and devices for cardiovascular disease and the complications of diabetes (type 1 and type 2).

TTRA Drugs and Devices is offered through two streams:

- Stream 1 – Drugs
- Stream 2 – Devices

The maximum funding term for TTRA Drugs and Devices is 42 months, with the TTRA investment for funded companies divided into two tranches (A and B). Access to Tranche B is dependent on successful completion of the defined Tranche A work package, to be determined by MTPConnect and the funded company, and demonstration of high commercial potential. Not all funded companies and only those with the highest commercial potential will receive both investment tranches.

Applicants will be required to provide a cash co-contribution relative to the value of the TTRA funding request to be eligible. Additional in-kind or cash contributions above this threshold will be viewed favourably.

Please review the detailed Funding Guidelines for further information about eligibility and the application process.

Expressions of Interest will be open from 1 October 2024 and will close on 4 November 2024 at 4pm AEDT. All EOI submissions must be made through the MTPConnect Accelerator Platform. The sample EOI application form provides an overview of what is required in the EOI.

For queries, please contact the TTRA team via email on [accelerator@mtpconnect.org.au](mailto:accelerator@mtpconnect.org.au).

# TTRA Drugs and Devices

- EOI now open!
- Submissions will close at **16:00 AEDT on 4 Nov 2024**



<https://accelerator.mtpconnect.org.au/>