


# Impact Report

To December 2024

*Fiji*

  
**SOLAR  
BUDDY**



# *Seeds of Impact*

## **FIJI**

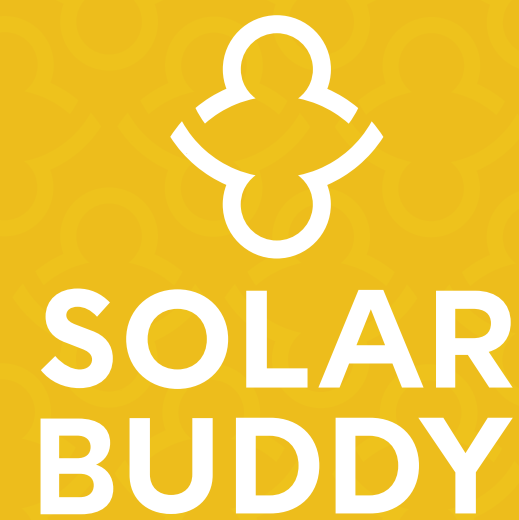
Imagine a world where nightfall doesn't mean darkness, where every child can study, every family can feel safe, and every community has the power to thrive.

Yet, for millions, energy poverty remains a daily struggle—limiting opportunity, safety, and hope.

By standing with us, you are not just providing light; you are igniting dreams, unlocking potential, and changing lives in Fiji.

Together, we are illuminating the path to a brighter, fairer future.

**Join us in uncovering the stories driving this impact in 2024**



**WE WILL NEVER  
STOP CREATING  
NEW WAYS TO  
FIGHT ENERGY  
POVERTY.**

“Energy poverty condemns billions in the developing world to darkness, ill health, unfulfilled futures and repeated cycles of poverty.”

– UN Foundation

**SolarBuddy is an impact organisation uniting a global community to illuminate the futures of all children.**



**We maximise impact by working towards achieving two goals:**

- **GIFTING** solar solutions to millions of children living in energy poverty
- **EDUCATING** and inspiring others to become agents of change to end energy poverty

# JUNIORBUDDY impact in Fiji

up to December 2024

(Impact calculated over ten years)

## DEVICES DISTRIBUTED

4,100

## LIVES IMPACTED

20,500

## EXTRA STUDY HOURS CREATED AFTER DARK

29,930,000

## EQUIVALENT SEEDLINGS PLANTED OVER TEN YEARS

87,330

## TONNES OF CO2 EMISSIONS REDUCED

5,248



# STUDENTBUDDY impact in **Fiji**

up to December 2024

(Impact calculated over fifteen years)

## DEVICES DISTRIBUTED

**200**

## LIVES IMPACTED

**34,400**

## EDUCATION & DIGITAL ACCESS

**8,760,000**

EXTRA STUDY HOURS  
& VITAL DIGITAL ACCESS

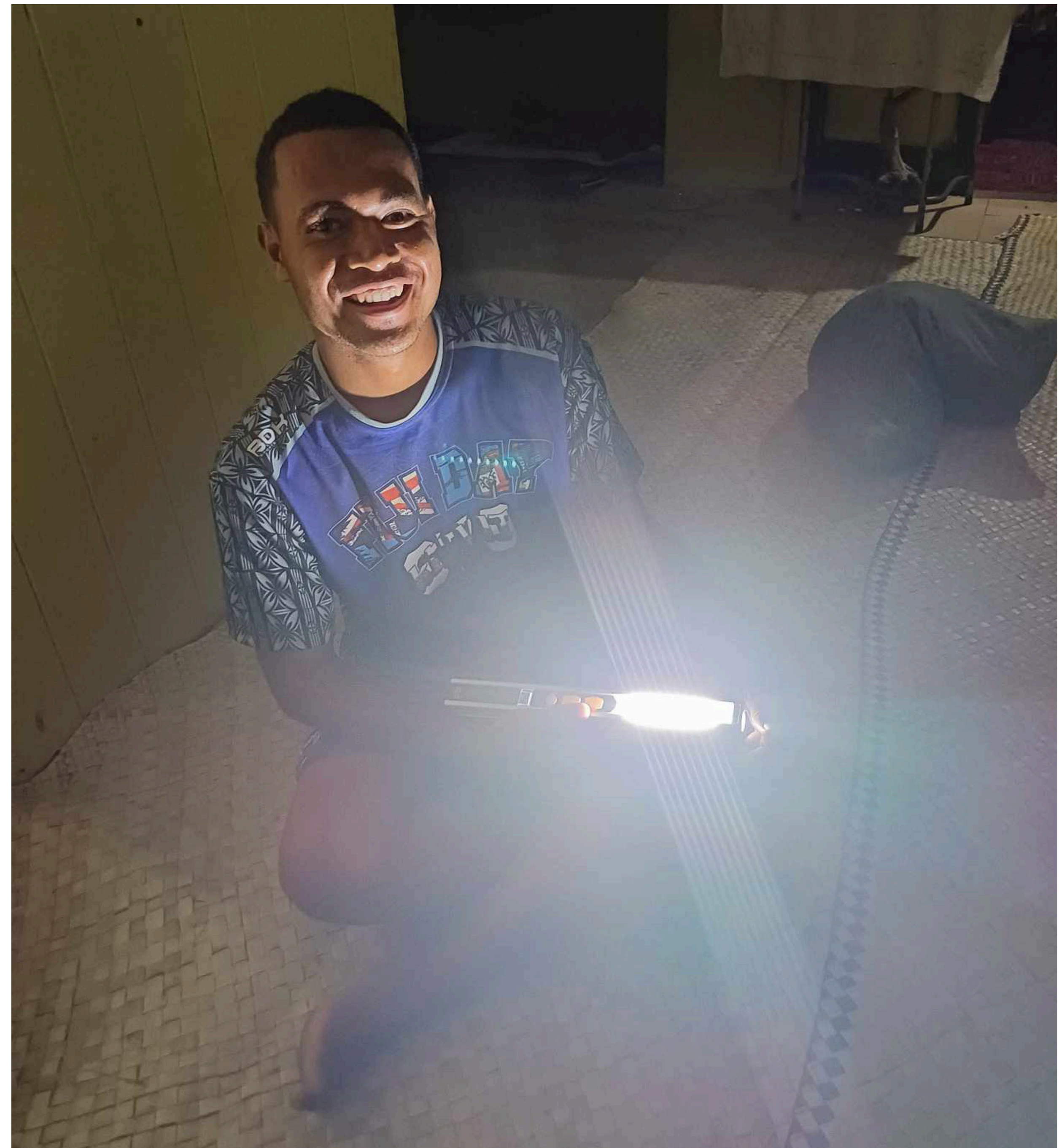
## NUMBER OF CHARGES FOR ESSENTIAL USB DEVICES

**24,090,000**

## TONNES OF CO2 EMISSIONS REDUCED

**1,646**

That's a reduction in emissions saved equal to  
3,000 standard short-haul journeys from LA to NY





## Measurable Impact

# \$7.34

Social impact value for every \$1 invested\*

*\*Social Return on Investment (SROI)*

That means for every \$10,000 of support, you are creating \$73,400 of social impact.

**“Measuring impact is key to effectively tackling energy poverty and understanding what more we can do as a global community to illuminate lives.”**

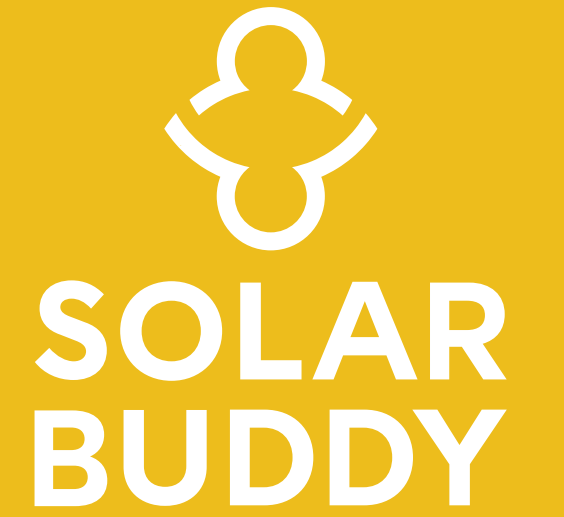
*– Simon Doble*

**With an increasing range of solutions, we aim to undertake further assessments to ensure our transformational impact is fully comprehended.**

SUSTAINABLE DEVELOPMENT GOALS

# SUSTAINABLE IMPACT GLOBALLY

“ Energy is the **golden thread** that connects economic growth, increased social equity, and an environment that allows the world to thrive. Development is not possible without energy, and sustainable development is not possible without sustainable energy.



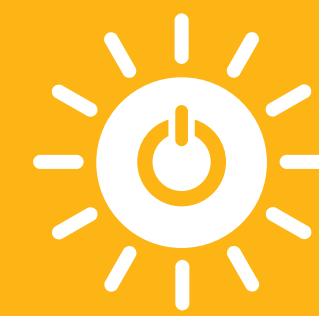
# SDG

**Ensure access to affordable, reliable, sustainable and modern energy for all.**



To learn more about our ongoing commitment to advancing the United Nations Sustainable Development Goals (SDGs) click [here](#).

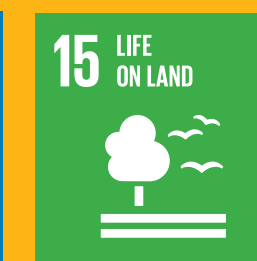
**7 AFFORDABLE AND CLEAN ENERGY**



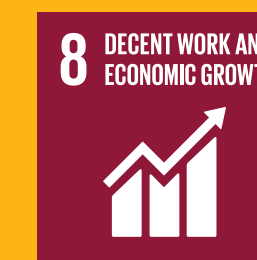
PEOPLE



PLANET



PROSPERITY



## Fiji: an overview

Fiji, a South Pacific island nation, consists of over 330 islands, with about 100 inhabited, spanning 18,300 square kilometres. It is renowned for its diverse geography, including volcanic mountains, tropical forests, and coral reefs.

With a population of around 900,000, Fiji is a multicultural society, blending Indigenous Fijian (iTaukei) traditions and Indian cultural influences. The economy relies on tourism, sugarcane farming, and fisheries but faces challenges from cyclones, rising sea levels, and economic vulnerabilities. Fiji plays a leading role in climate advocacy, emphasizing sustainability and resilience for small island nations in global forums.



## Why we work in Fiji

As of 2023, the World Bank reports that 41% of Fijians live in rural and remote communities, especially on smaller islands, where access to reliable electricity is limited or unavailable.

Many households in these areas rely on kerosene lamps or candles, which are not only costly but also emit harmful smoke, posing health risks such as respiratory illnesses.

Fiji's vulnerability to cyclones and natural disasters often disrupts electricity infrastructure, making solar-powered lights a critical backup during such events.

SolarBuddy devices provide a safe, clean, and sustainable lighting solution, enabling children to study after dark, improving educational outcomes, and enhancing overall quality of life.



# Fiji: the impact of energy poverty

## LIVING BELOW NATIONAL POVERTY LINE

**24%**

of the population live below the national poverty line (UNSD 2019)  
41.5% in rural areas compared to 20.4% in urban areas (World Bank 2021)

## ELECTRICAL CONNECTION

**50,000**

Fijians living in rural areas have no access to electricity (World Bank 2024)

Statistics and figures calculated from [www.ourworldindata.org](http://www.ourworldindata.org) unless otherwise stated.



**WE ACHIEVE IMPACT BY BUILDING  
COMMUNITIES OF CHANGE. OUR LOCAL  
PARTNERS ARE A KEY TO THIS STORY.**



*Students at Vatoa District School receiving their JuniorBuddy lights.*

# HOW WE CREATE **IMPACT**

We partner with in-country distribution partners to maximise our impact. 2024 saw our first distributions in Fiji, specifically across the remote islands of the Lau Province.

## **Partner Snapshot – LECT Education**

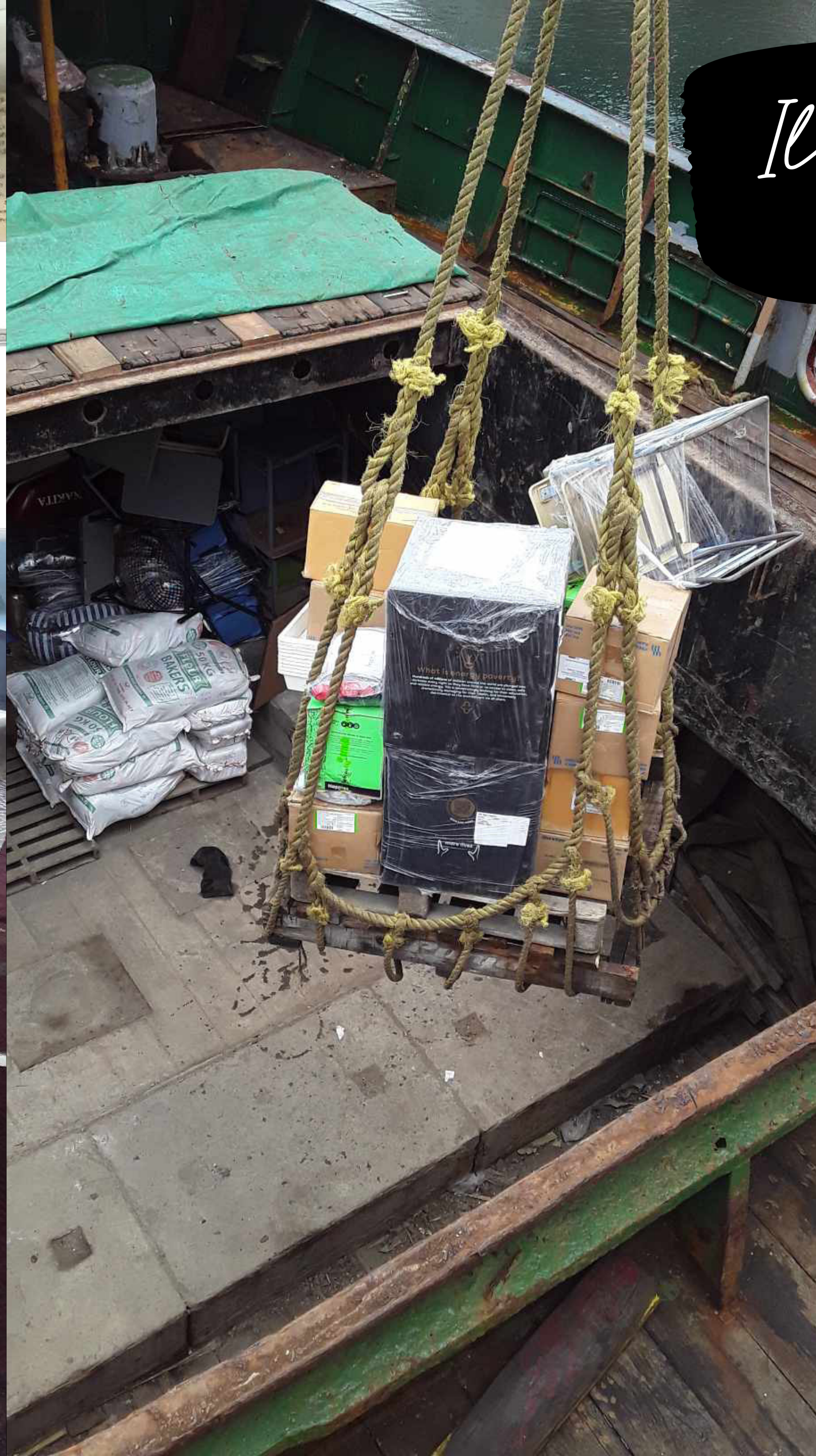
Established in 2021 Lau Education Charitable Trust (LECT) is led by a Board of Directors that comprises Lauans from a diverse range of professions across the globe, united in their desire to improve access to quality education for the children of the remote islands of Lau province in Fiji.

The Lau Archipelago consists of about 60 islands 23 of which are inhabited, scattered over an estimated 130,000 square kilometres of ocean, making it Fiji's most remote province.

There are some 95 schools across 18 of these islands and as a result of their remote location, many of these communities live with little to no access to reliable power, often resorting to using kerosene, candlelight or burning coconut husks to light their way through the night.

Over the course of the year LECT's team of dedicated volunteers has delivered a SolarBuddy light to every school aged child living in the Lau province, enabling them to continue their studies after dark. Each of the schools, and many of the health centres have also received the StudentBuddy devices to light larger spaces and charge USB devices.





*Illuminating lives together*



# UNITING A GLOBAL COMMUNITY

This year has been transformative. We distributed over 50,000 solar solutions, reaching 300,000 people affected by energy poverty, creating millions of study hours, and forging new partnerships.

I'm incredibly proud of the SolarBuddy team and our partners for this record-breaking impact.

Your support has illuminated the lives of families in Fiji, and their stories fill me with gratitude. However, there's still much to be done. Nearly 10% of the global population remains trapped in poverty, lacking access to energy, education, healthcare, and a sustainable future.

Our efforts are making a real difference, but we must not slow down. Rising inequality and the climate crisis threaten to reverse our progress. That's why we're doubling down on partnerships, expanding our scope, and focusing on sustainability.

Thank you for standing with us—let's keep moving forward.

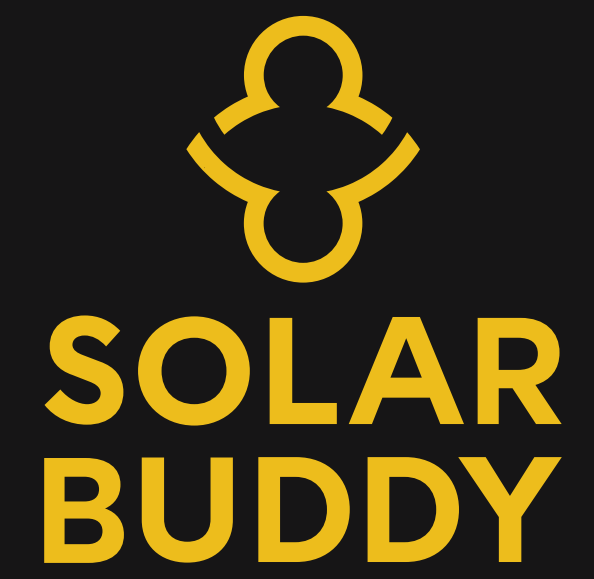


**Simon Doble**  
*Founder and Chair, SolarBuddy*





**THANK YOU!**



[www.solarbuddy.org](http://www.solarbuddy.org)

hello@solarbuddy.org